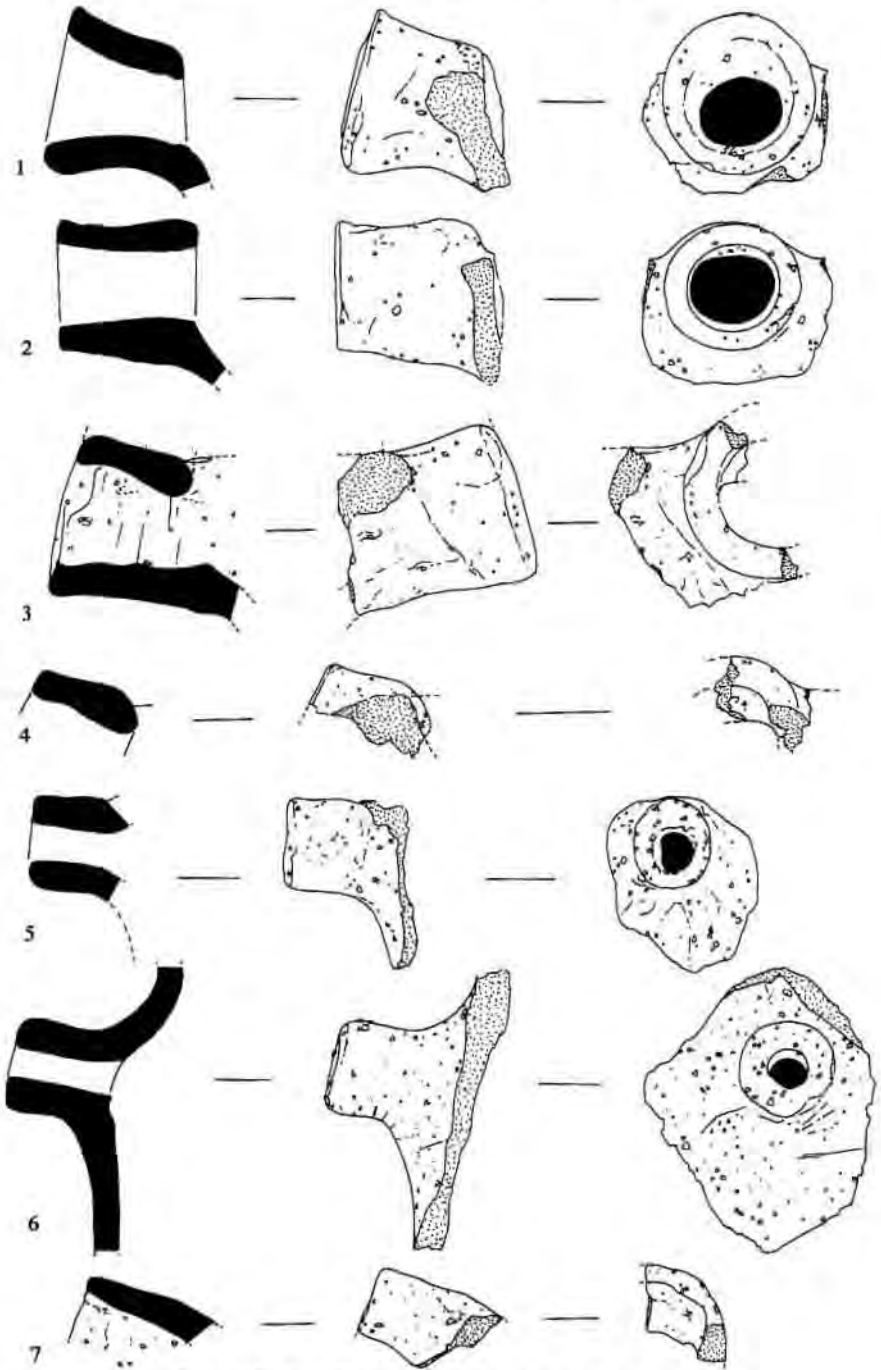


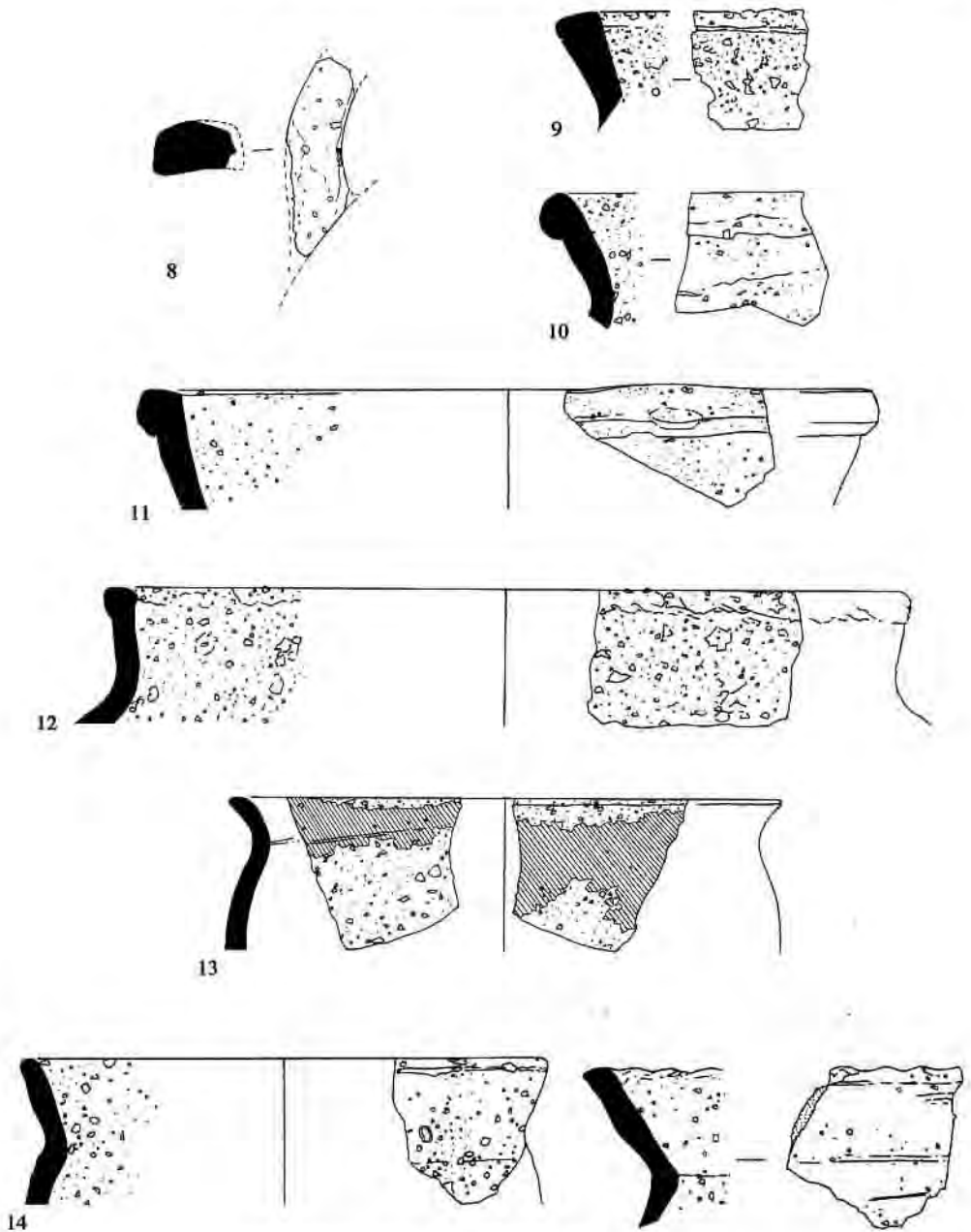
CERAMIC FINDS FROM GLASTONBURY ABBEY,
1901–1979

VOLUME 140, PP. 73–104

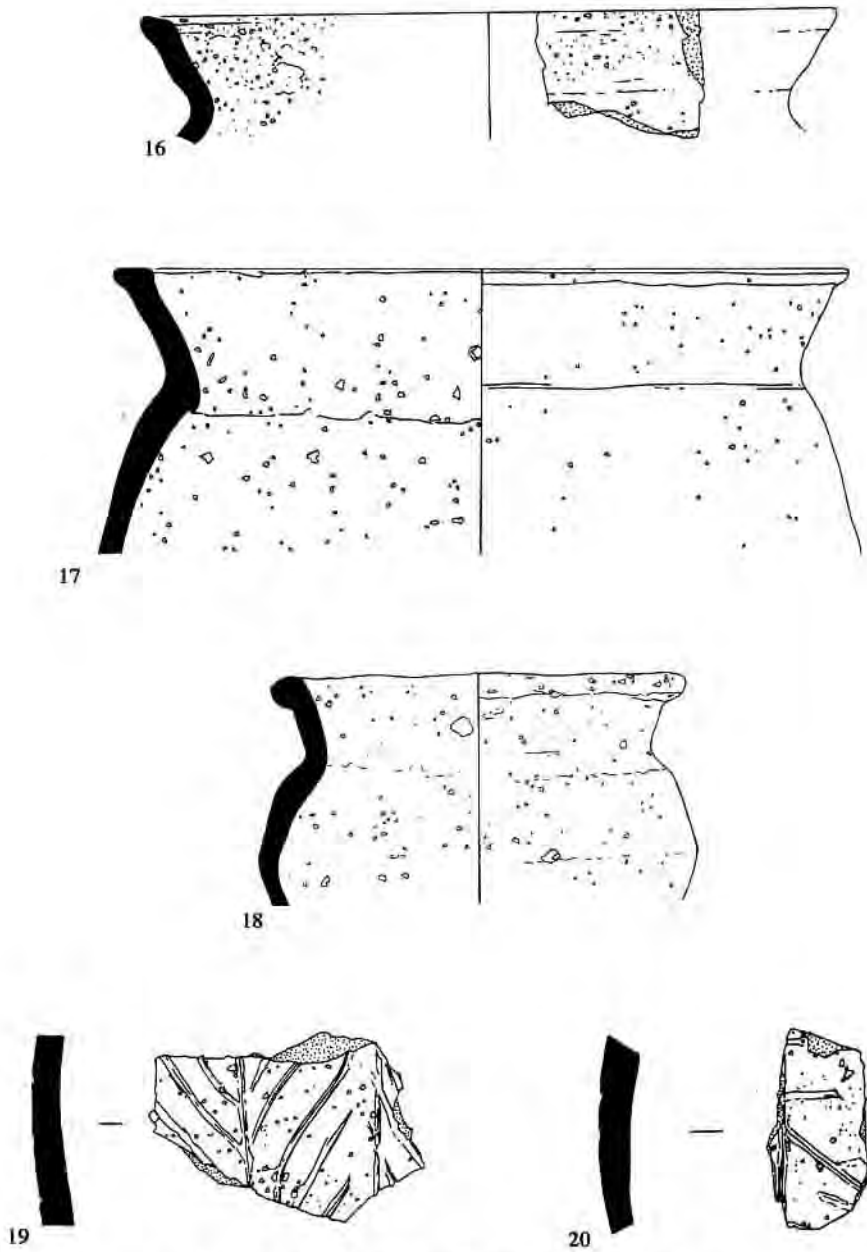
We regret that the scales × numbers intended to identify the drawings of pottery which illustrated this article were inadvertently left out. We apologise to our readers for any confusion and to Mr. Oliver Kent for any embarrassment which this may have caused him. The figures are reprinted here with their numbers.—Editor.



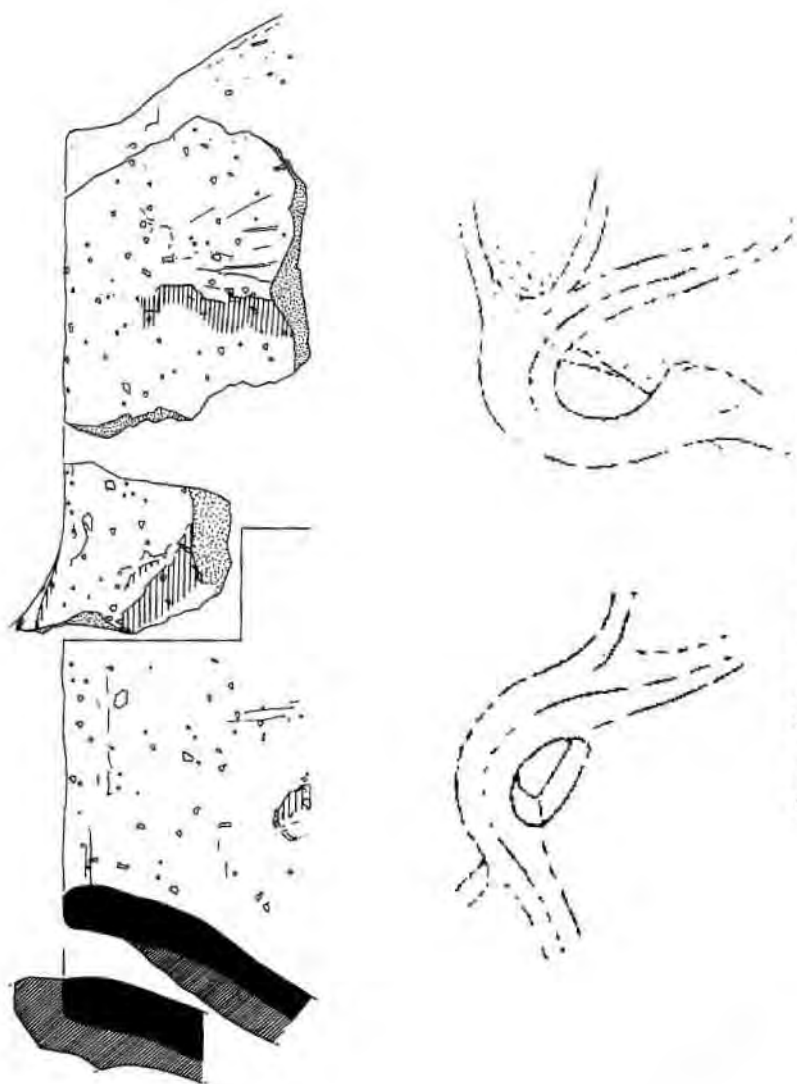
Ceramic Finds at Glastonbury Abbey 1901-1979. Part I
Fig. 1. Tubular spouts; scale 1:2.



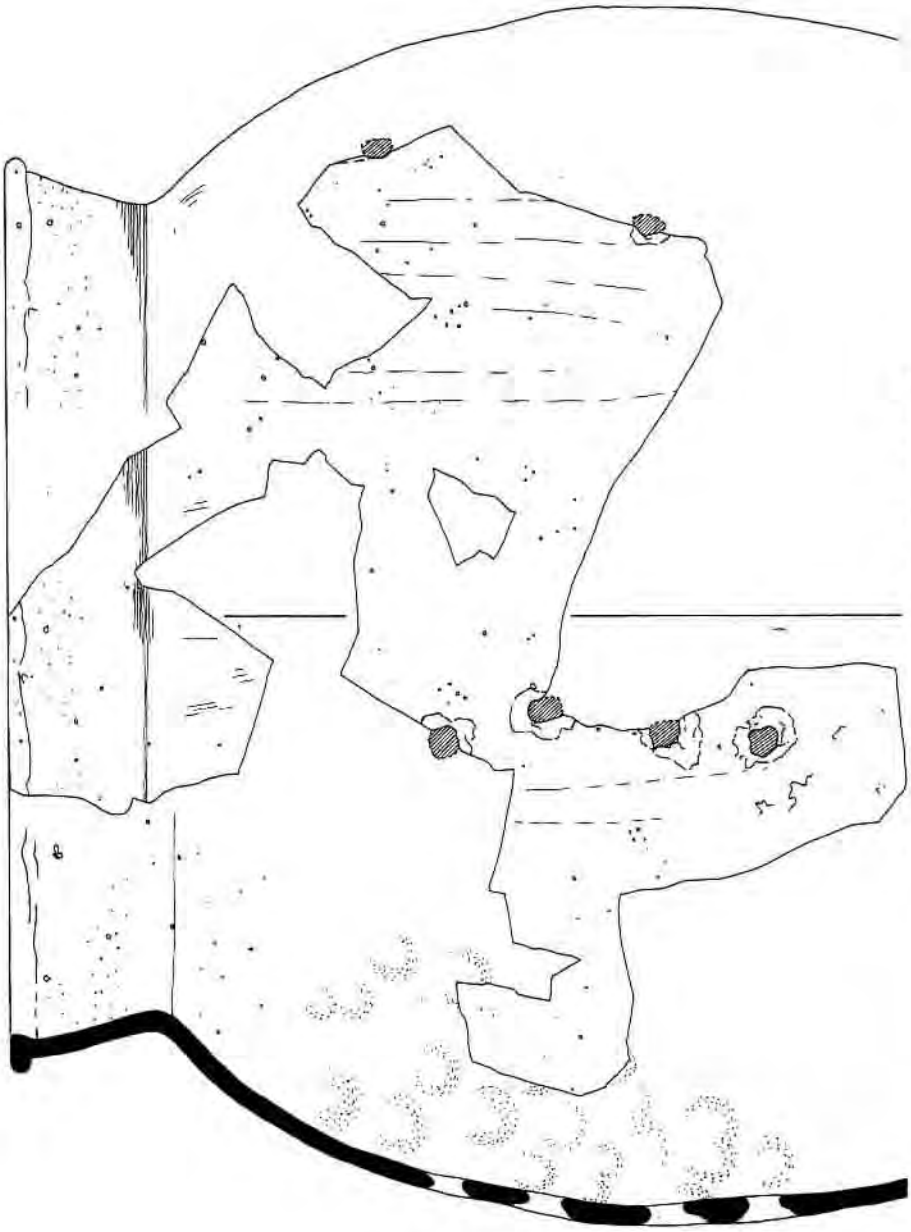
Ceramic Finds at Glastonbury Abbey 1901-1979. Part I
Fig. 2. Handle. Rims 9-15, Fabrics 1 and 3; scale 1:2.



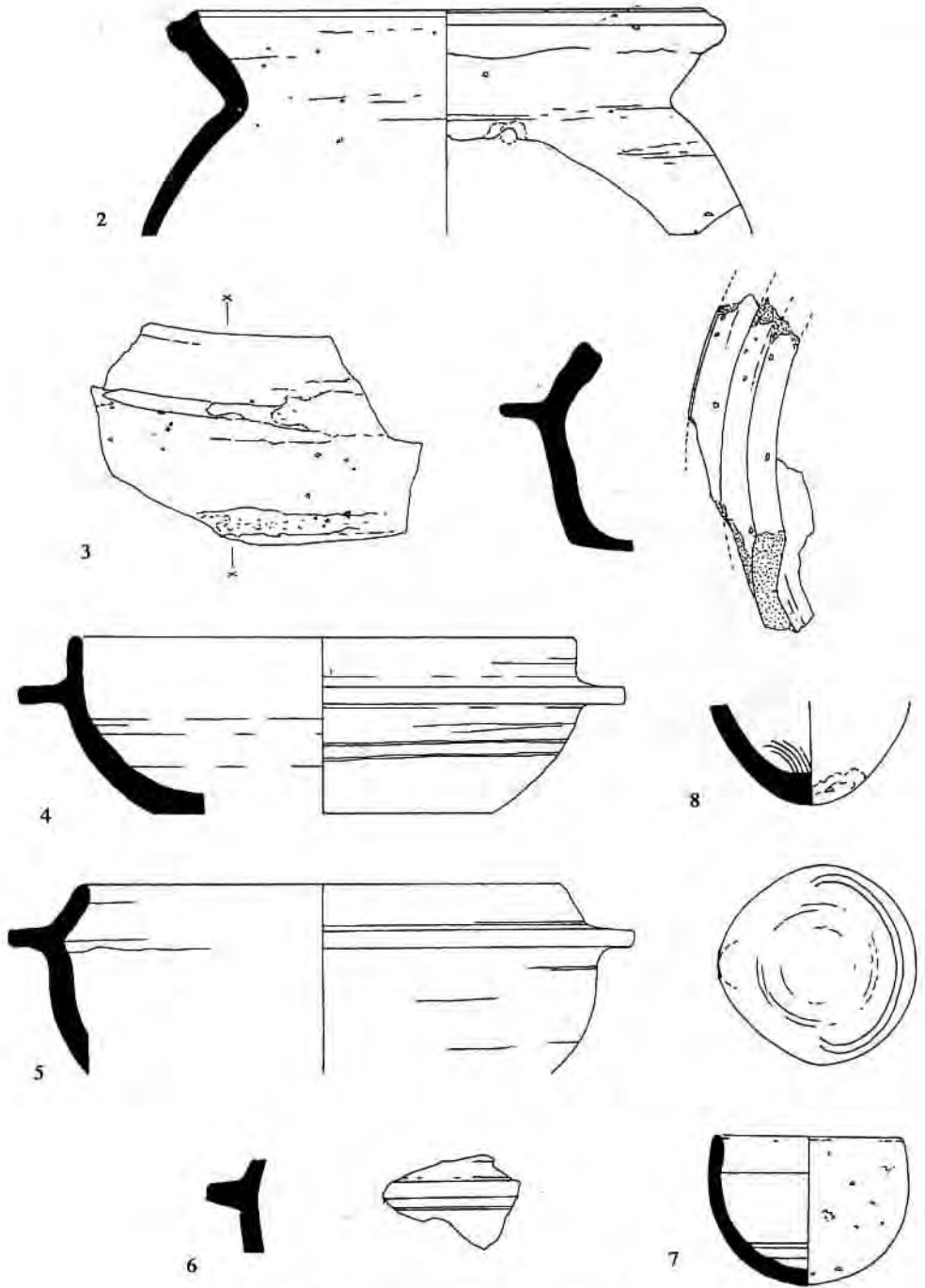
Ceramic Finds at Glastonbury Abbey 1901-1979, Part I
 Fig. 3. Rims 16-18, Fabrics 4-6. Decorated body sherds; scale 1:2.



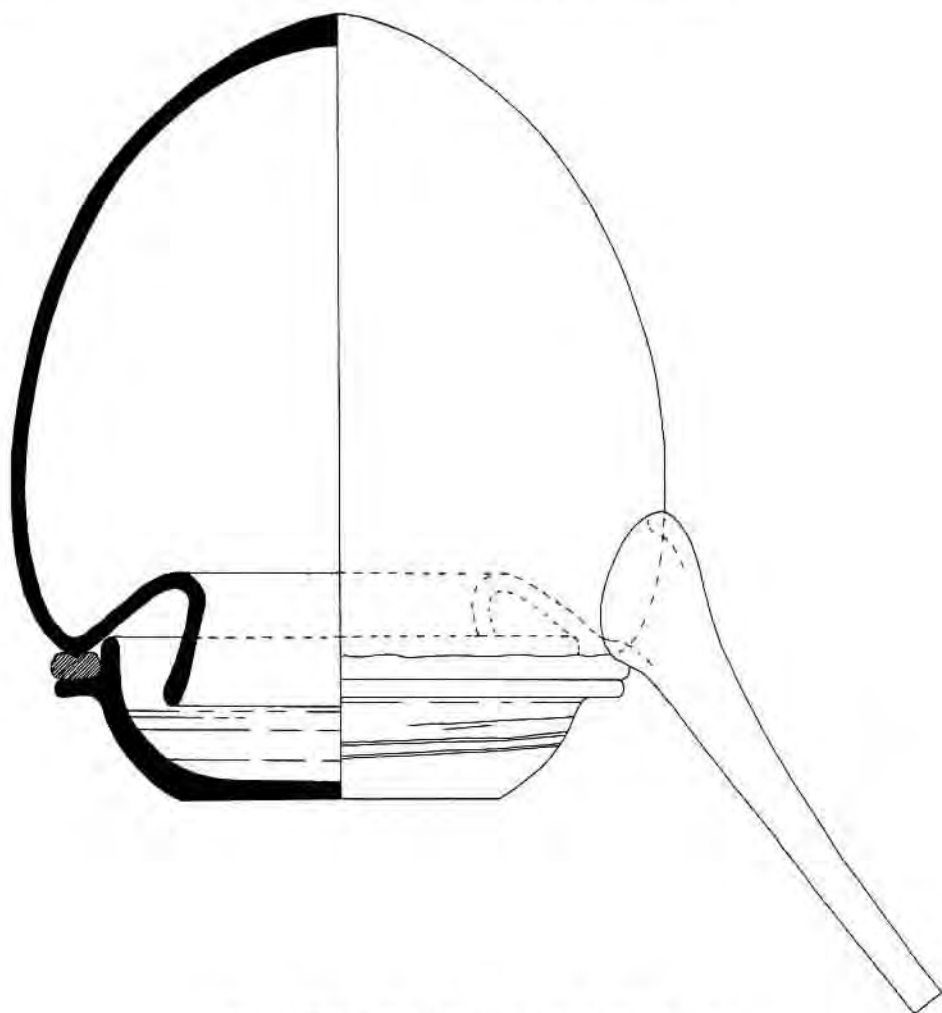
Ceramic Finds at Glastonbury Abbey 1901–1979, Part I
Fig. 4. Large decorated vessel; scale 1:2.



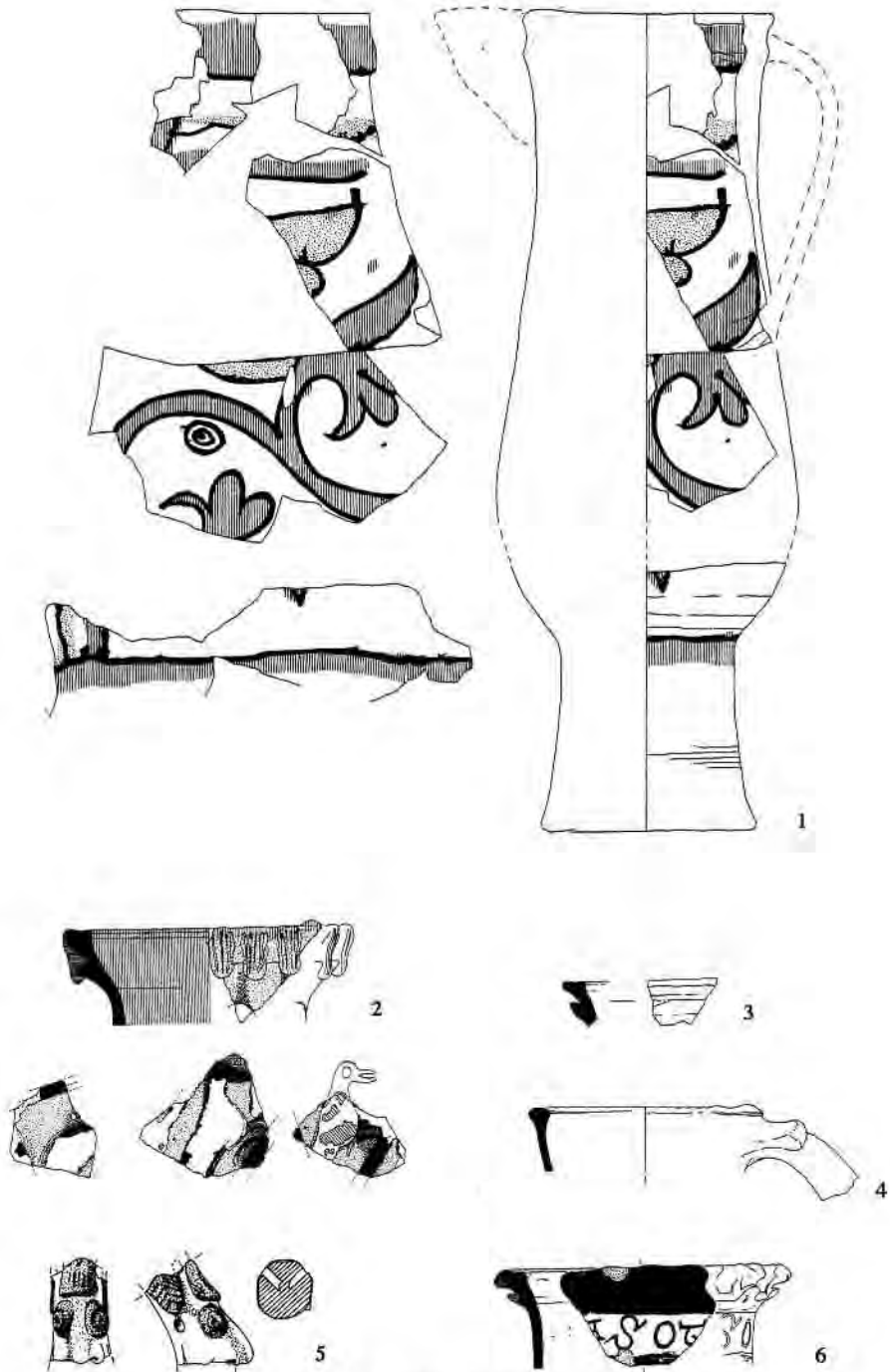
Ceramic Finds at Glastonbury Abbey 1901-1979. Part II
Fig. 1. Perforated vessel; scale 1:2.4.



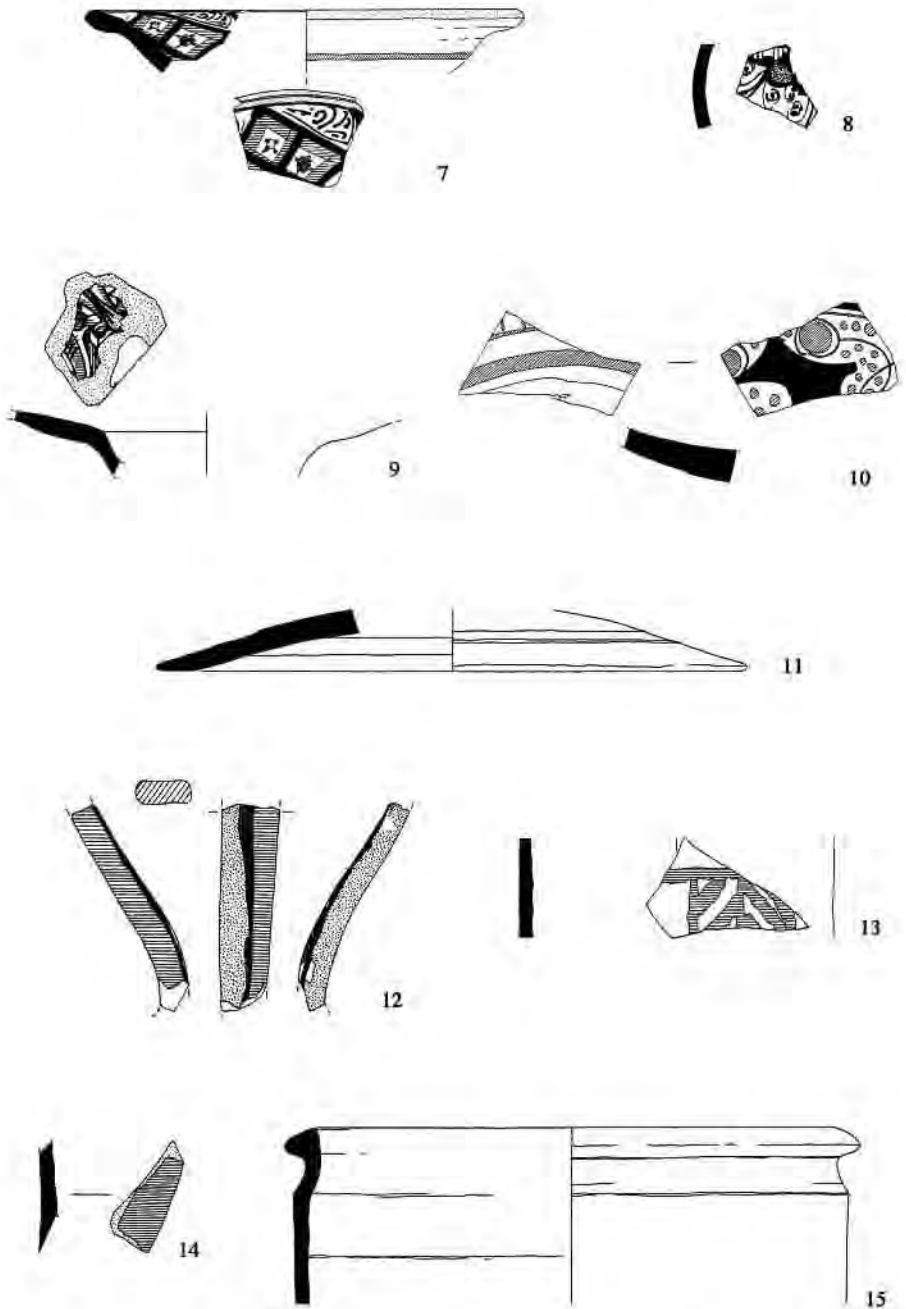
Ceramic Finds at Glastonbury Abbey 1901-1979. Part II
Fig. 2. Perforated vessel, distilling bases and crucibles; scale 1:2.



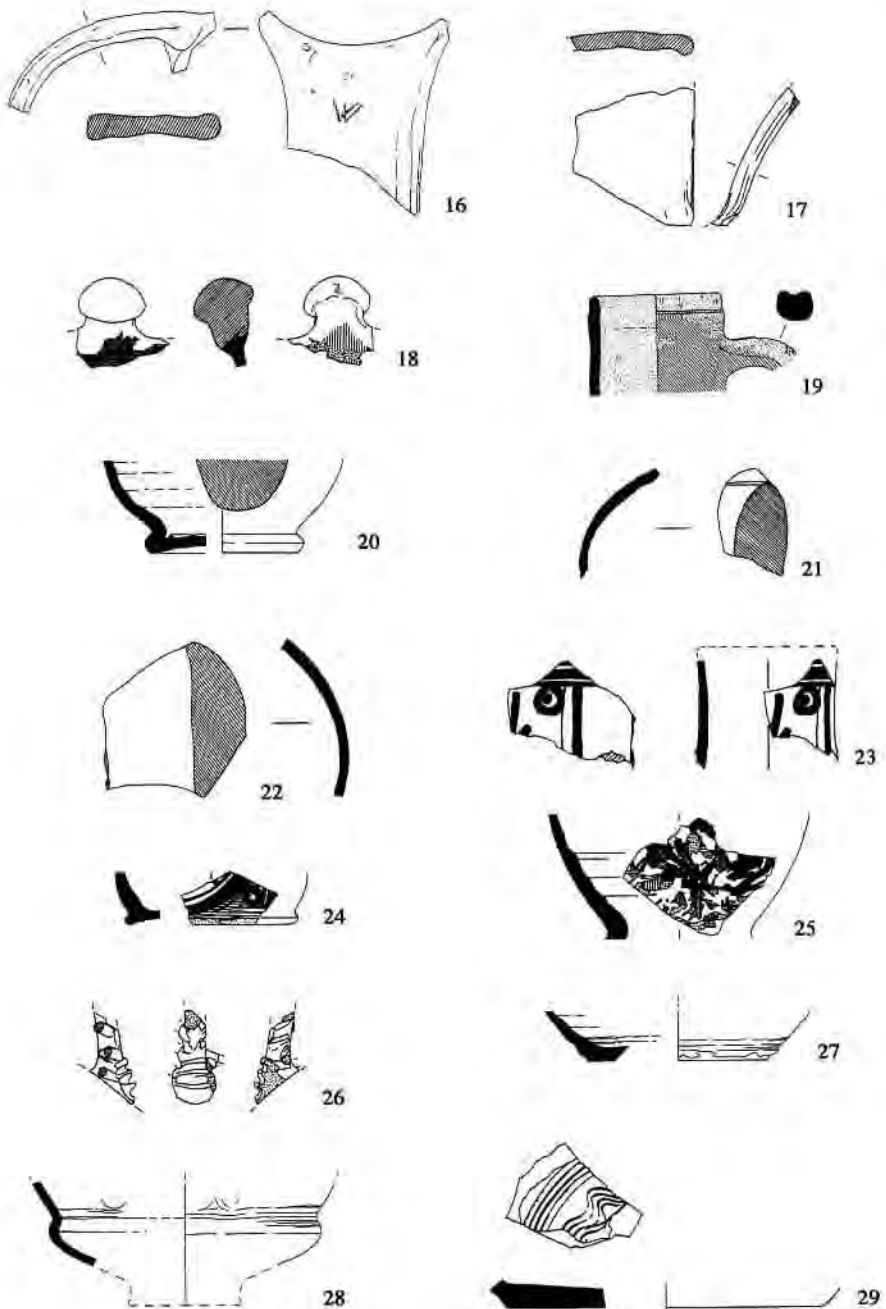
Ceramic Finds at Glastonbury Abbey 1901–1979. Part II
Fig. 3. Reconstructed distilling apparatus,



Ceramic Finds at Glastonbury Abbey 1901-1979. Part III
Fig. 1. Late medieval imports and exotic local pottery. French 1-4; English 5-6; scale 1:3.



Ceramic Finds at Glastonbury Abbey 1901-1979, Part III
Fig. 2. Late medieval imported pottery. Italian 7-9; Iberian 10-15; scale 1:3.



Ceramic Finds at Glastonbury Abbey 1901-1979. Part III

Fig. 3. Late medieval pottery. French 16-22; Low Countries 23-25; Surrey/Hampshire border wares 26-28; scale 1:3.