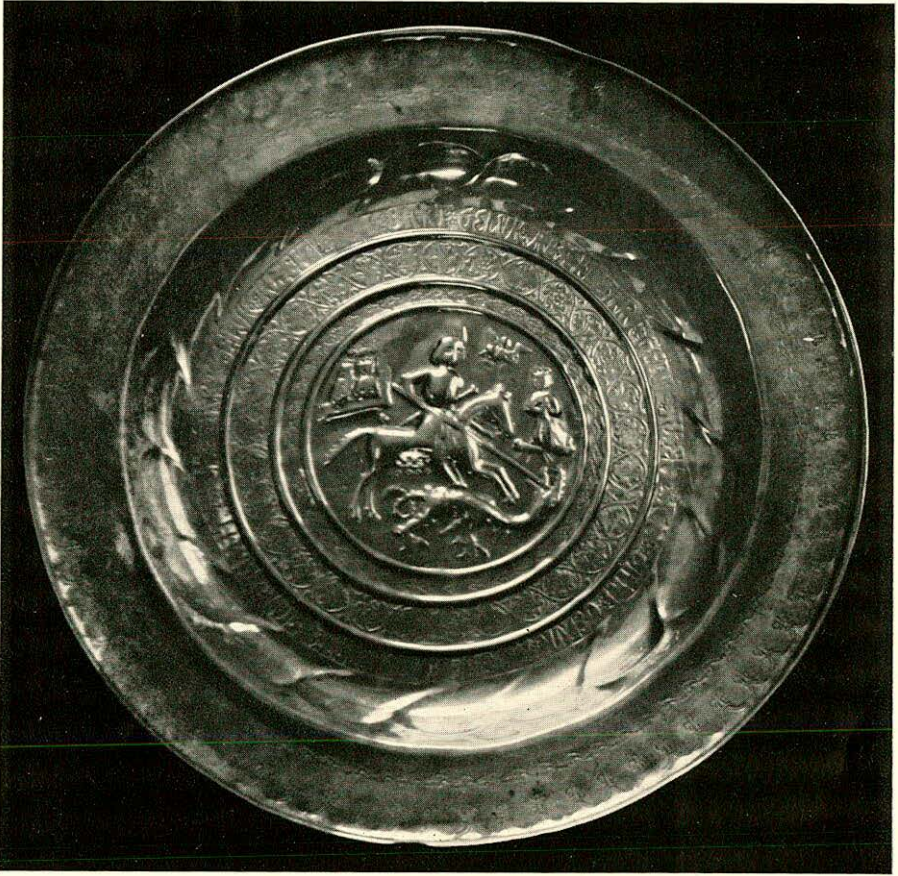


Somersetshire
Archæological & Natural History
Society

PROCEEDINGS
DURING THE YEAR 1926

VOL. LXXII

The Council of the Somersetshire Archæological and Natural History Society desire that it should be distinctly understood that although the volume of PROCEEDINGS is published under their direction, they do not hold themselves in any way responsible for any statements or opinions expressed therein; the authors of the several papers and communications being alone responsible.



ALMS-DISH OF FLEMISH ORIGIN,
CHURCH OF ST. JOHN THE BAPTIST, GLASTONBURY

[See p xxxvii]

PROCEEDINGS
OF THE
Somersetshire
Archaeological & Natural History
Society

FOR THE YEAR 1926

(ANNUAL MEETING, GLASTONBURY)

VOL. LXXII



Taunton

PRINTED FOR THE SOCIETY

BY

BARNICOTT AND PEARCE, THE WESSEX PRESS

MCMXXVII



PREFACE

THE thanks of the Society are due to Dr. A. C. Fryer for the blocks and printing of the three plates that illustrate his paper on Monumental Effigies ; to Dom Ethelbert Horne for his contribution towards the illustrations of Medieval Church Embroideries ; to Mr. F. Bligh Bond for photographs to accompany his concluding paper on the excavations at Glastonbury Abbey, which he conducted in 1921 ; to the Vicar of Glastonbury, the Rev. Lionel S. Lewis, for giving the block of the Alms-dish ; to Mr. Roland Paul for the drawing of the Gunthorpe arms in Mark Church ; to various persons named in the text who have contributed drawings for this volume, and to the Editor of the *British Bee Journal* for the loan of a block of the portrait of the late Mr. T. W. Cowan. Our thanks are also due to the Directors and Joint Committee of the Excavation at Chelm's Combe for the Report, which contains several illustrations provided by them.

THE EDITORIAL COMMITTEE

TAUNTON CASTLE

May, 1927