



*Somersetshire*  
*Archæological & Natural History*  
*Society.*

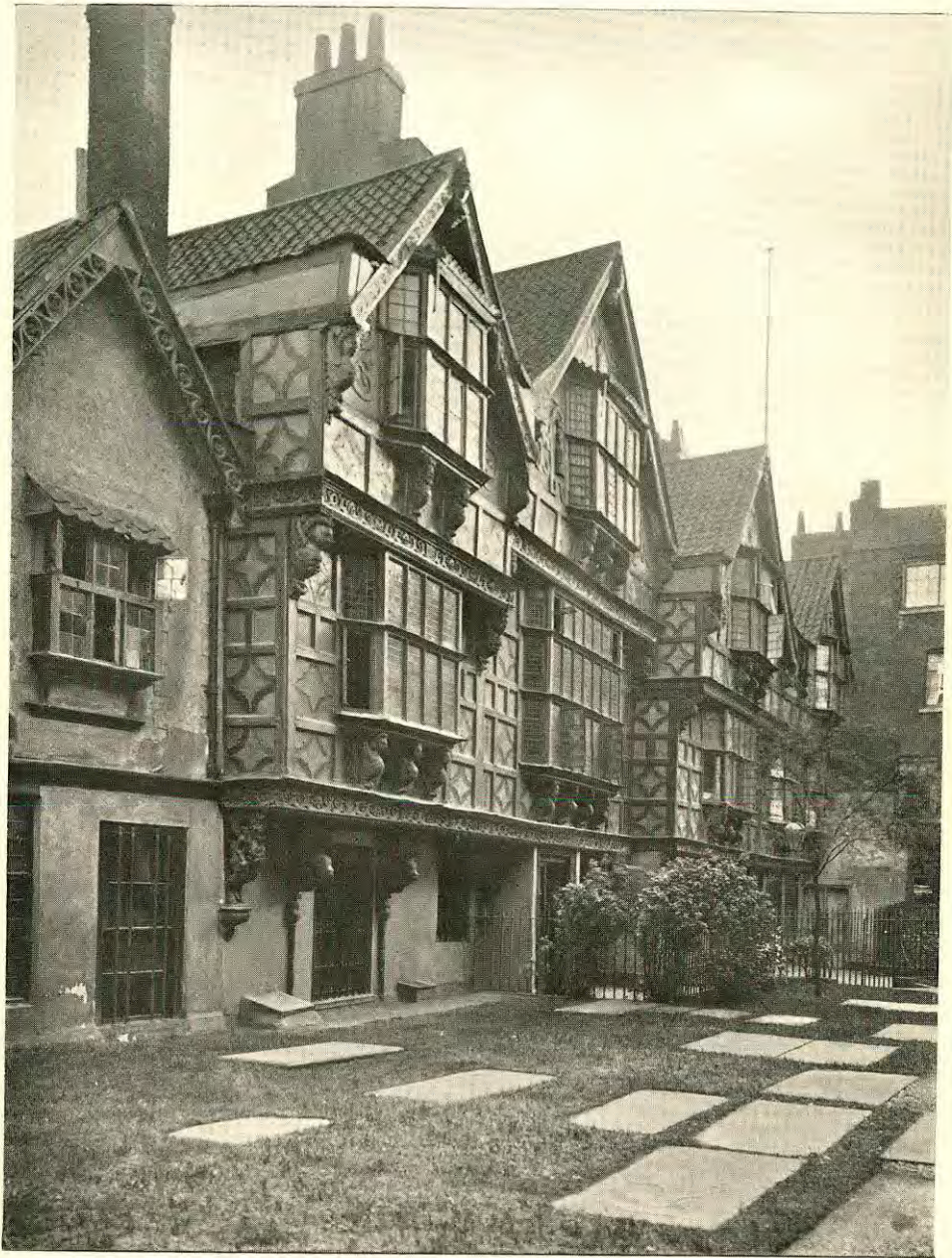
---

PROCEEDINGS  
DURING THE YEAR 1924.

---

VOL. LXX.

*The Council of the Somersetshire Archaeological and Natural History Society desire that it should be distinctly understood that although the volume of PROCEEDINGS is published under their direction, they do not hold themselves in any way responsible for any statements or opinions expressed therein; the authors of the several papers and communications being alone responsible.*



ST. PETER'S HOSPITAL, BRISTOL.

*From a Photograph by Mr. Fred Little, Castle Mill Street, Bristol.*

PROCEEDINGS  
OF THE  
**Somersetshire**  
**Archaeological & Natural History**  
**Society**

FOR THE YEAR 1924

(ANNUAL MEETING, BRISTOL).

VOL. LXX.



**Taunton:**

PRINTED FOR THE SOCIETY

BY

BARNICOTT AND PEARCE, THE WESSEX PRESS

MCMXXV.



## PREFACE.

---

THE thanks of the Society are due to Dr. A. C. Fryer for defraying the cost of the reproduction and printing of his photographs of the monumental effigies given in Plates IV to XII; to the Bristol and Gloucestershire Archæological Society for the loan of the block of the Red Lodge, Bristol, and its permission, combined with that of Mr. George H. Oatley, to copy the plan of St. Mary Redcliffe Church; Mr. John E. Pritchard for obtaining the beautiful picture of St. Peter's Hospital as the frontispiece of this volume; Mrs. Walter for the loan of the block of Dr. Walter; the Entomological Section for the block of Colonel Jermyn; Mr. H. C. Charlewood for his drawings of antiquities from Ham Hill included in Plate XIII; the Editors of *S. & D. N. & Q.* for permission to copy from their vol. VI the plate of the Botreaux effigies in North Cadbury Church; and the National Union of Teachers for sanctioning the use of the geological diagrams accompanying Prof. Reynolds' paper on the Avon Gorge.

The Map of Somerset showing the ornithological districts, facing p. lx, is primarily intended for the eleventh Report of the Ornithological Section for 1924, and is included here by arrangement with that section.

For the Editorial Committee, .

G. W. SAUNDERS (*Chairman*).

H. ST. GEORGE GRAY (*sub-Editor*).

TAUNTON CASTLE,

*April*, 1925.