

## Additions to the Museum.

*From December 1st, 1904, to December 31st, 1905.*

---

### I. ARCHÆOLOGY.

#### (1). STONE IMPLEMENTS.

**WORKED** flint flake. Found in Ash Wood, near Ash Priors.—Presented by Sir WROTH P. LETHBRIDGE, Bart.

Flint flake, length  $3\frac{1}{2}$  ins., having three dorsal ridges. Found in the garden of the School House, Norton Fitzwarren, 1905.—Presented by Mr. J. COOK.

Several flint implements and flakes, together with sea-shells and sand, from a Neolithic Settlement found by the donor on Shapwick Heath, Somerset,  $\frac{3}{4}$  mile south of Shapwick Railway Station.—Presented by Mr. ARTHUR BULLEID, F.S.A.

Two chert flakes, picked up by the donor in a field at West Hatch, near Taunton, July, 1903.—Presented by the Rev. S. E. DODDERIDGE.

#### (2). OTHER ARCHÆOLOGICAL REMAINS.

Large terra-cotta lamp, length  $6\frac{1}{2}$  ins., of late Roman style. The receptacle for the wick is unusually large. It is ornamented with a representation in relief of Christ surrounded by the heads of the twelve apostles, and the inscription, PACEM MEAM DO VOBIS. Below Christ are two palm-branches crossed. From one of the Catacombs, Rome.

Large terra-cotta Roman lamp, length  $7\frac{3}{4}$  ins., in the form of an ox's head; the crown of the head is surmounted by a cres-

cent forming the handle; an ox's head is also represented on the handle. On the base SASAVCV is inscribed. From Rome. (See *The Evil Eye*, pp. 211-13).

Roman lamp of terra-cotta with a short projecting handle; ornamented with a bird. From Rome.

Terra-cotta Roman lamp with perforated handle; ornamented on the top by a crescent surmounted by a cross. The indented name on the bottom is not quite clear. From Rome.

Thin red terra-cotta Roman lamp ornamented by a boar in relief. Probably early in date. Purchased from Barone (dealer) of Naples.

Presented by Mr. F. T. ELWORTHY, F.S.A.

Single-looped bronze palstave, length  $6\frac{1}{2}$  ins., in excellent state of preservation. Collected in Somerset, but unticketed. Of a type assigned to the commencement of the second half of the Bronze Age.

Bronze socketed spear-head, of the late Bronze Age, length 10 ins., with two crescentic openings in the blade, one on each side of the mid-rib. Believed to have been found in North Devon.

Heavy bronze Kelto-Roman fibula, or safety-pin brooch, length  $3\frac{3}{8}$  ins.; pin deficient; of harp-shaped outline, with ring for suspension at the head. Found at Shepton Mallet—probably with the great "find" of fibulæ and other Roman remains at Charlton, 1887. Fibulæ of precisely similar design have been found at Charterhouse-on-Mendip.

Handled earthenware lamp, Roman, inscribed CTESO on the bottom. Found at Cumæ, near Naples.

Rough light drab-coloured earthenware lamp, of elongated oval outline; having a large handle and oil and wick holes. From the Julian Basilica, Forum, Rome, 1853.

Two tiny earthenware pots, with vertical sides and "beaded" rims and bases.

Small terra-cotta head. From Cumæ.

Small slender lachrymatory, probably Roman. From Arles, France.

Examples of iridescent Roman glass. From tombs at Arles.

Two bone pins. Pompeii.

A few fragments of Roman pottery. From Chesters.

Small earthenware stand or pedestal—perhaps for burning incense. From Chesters (the Roman Cilurnum).

Earthenware tablet, with figure of Anubis, Egypt.

Presented by Mr. E. BAGEHOT KITE, Taunton.

Harp-shaped bronze fibula of Roman Provincial type, and D-shaped design. The pin is not continuous with the bow. Found in quarrying on Sparkford Hill, *circa* 1845, with a human skeleton and a pottery vessel; depth 4ft. from the surface.—Presented by the Rev. TREVOR GRIFFITHS, Sparkford.

Two plaster casts (bronzed) taken from a double mould in syenite, found at Bulford, near Amesbury, Wilts; (1) a socketed celt with *two* loops; (2) a socketed celt with one loop. The original mould is in the Pitt-Rivers Museum, Farnham, Dorset, and was formerly in the Duke Collection at Amesbury.—Deposited by Mr. H. ST. GEORGE GRAY, *Curator*.

Fragments of Romano-British pottery from the large ditches on Codford Down, Wilts.—Presented by the Rev. C. V. GODDARD.

Three clay tobacco pipes, marked on the heels W.T.; early XVII Century. Found when the donor rebuilt his premises at 16, Newgate Street, London, 1905.—Presented by Mr. F. W. HEMBRY.

Three clay tobacco-pipes: two XVIII Century, one early XIX Century.

Two Kimmeridge shale “chucks” from the lathe: probably Roman. Found at Kimmeridge.

Iron spur, early XIX Century. Found in an orchard near Somerton.

Presented by Mr. E. W. VALENTINE, Somerton.

Three early Mediæval paving-tiles, from Christchurch Cathedral, Dublin. The outline of the designs in each case is incised, but not inlaid. One, much damaged, represents a lion rampant, the glaze being dark brown. Another, of the same design, has a yellowish-green mottled glaze. The third is glazed brown, and is decorated with a grotesque head.—Presented by the Rev. Dr. S. J. M. PRICE, Kingston Manor House, Taunton.

Seven pieces of XIII Century encaustic paving-tiles, found in the roadway of Priory Avenue, Taunton, in June, 1898. One piece is a portion of a large tile, 7ins. square, probably representing St. George and the Dragon.—Presented by the Rev. S. E. DODDERIDGE.

The following relics, found in the GLASTONBURY LAKE VILLAGE, have been presented by the Excavation Committee:—

*Bronze*:—E 41, rivet-head, Mound 42, 1894; E 149, rivet-head, Mound 1, 1897; E 164, piece of "bordering," Mound 29, 1898; E 191, spiral finger-ring, Mound 58, 1904 (*Proc.*, L, pt. ii, pl. vii).

*Bone*:—B 373, worked metatarsus of sheep or goat, Mound 55, 1902 (*Proc.*, XLVIII, pl. iii, fig. 8); B 375, another, Mound 78, 1904 (*Proc.*, L, pt. ii, p. 89); B 376, needle, Mound 64, 1904.

*Baked Clay*:—D 70, finger-marked ball of clay, Mound 55, 1902 (*Proc.*, XLVIII, pl. iii, fig. 9); D 71, partly perforated ball, Mound 78, 1904 (*Proc.*, L, pt. ii, p. 89); a small partly perforated pellet of clay, 1904; triangular loom-weight, Mound 70, 1905; three baked and three unbaked sling-bullets.

*Flint*:—F 46, flint scraper, Mound 57, 1896; F 367, worked flake, Mound 78, 1904 (*Proc.*, L, pt. ii, p. 90).

*Antler*:—H 284, cheek-piece of horse's bit, Mound 58, 1904 (*Proc.*, L, pt. ii, pl. viii); H 286, worked roe-deer antler, Mound 55, 1904 (*Proc.*, L, pt. ii, pl. viii); H 291, ornamental weaving-comb, Mound 78, 1904 (figd. as H 284 and 286); H 295, worked antler, Mound 51, 1904 (*Proc.*, LI, pt. ii, p. 80); dentated end of a large decorated weaving-comb, Mound 55, 1902 (*Proc.*, XLVIII, pl. iii, fig. 7).

*Pottery*:—P 162, two ornamental fragments, Mound 55, 1902 (*Proc.*, XLVIII, pl. iii, figs. 13 and 14); P 165, portion (about one-half) of a black ware ornamental pot, Mound 55, 1904 (*Proc.*, L, pt. ii, pl. ix); portion of rim of black vessel, ornamented with a double zigzag, Mound 55; ditto, Mound 55 (*Proc.*, L, pt. ii, pl. ix); fragment of ornamental black pottery, Mound 78 (*Proc.*, L, pt. ii, pl. ix).

*Stone*:—S 32, small *calculus*, Mound 58, 1904; another, Mound 55, 1904; S 34, flat round disc of sandstone, Mound 78, 1904 (*Proc.*, L, pt. ii, p. 91); S 38, incomplete spindle-whorl, Mound 54, 1904 (*Proc.*, L, pt. ii, pl. ix); three whetstones, Nos. 7, 69, and 70.

## II. ETHNOGRAPHY.

One of the javelins, length 7ft., carried by the "Somerset Javelin Men" who formed the judge's escort during the period of the Assizes. The javelin dates from the beginning of the third quarter of the XIX Century. Two tassels accompany this javelin, one being blue and red, the other white and red.—Presented by Mr. A. J. VICKERY, Taunton.

Three pewter communion vessels, designed to supplement the existing silver plate belonging to Thornfalcon Church. (1) A small paten on tall foot; (2) a high flagon of the tankard pattern; and (3) a smaller tankard, or drinking-cup, with a lid and handle, marked T.F. 1722. (Also a leather

case for plate from the church).—Deposited on loan by the Rector, Churchwarden and Sidesmen of Thornfalcon Church, near Taunton.

Old drum of the 2nd Somerset Militia. On it are painted the Royal Arms, with inscriptions **2ND SOMERSET MILITIA** and **HONI SOIT QUI MAL Y PENSE**.—Presented by Mr. F. J. MOORE, late Bandmaster of the 2nd Batt. Volunteers, Taunton.

Twenty-one iron and two brass door-keys of the XV, XVI, XVII and XVIII Centuries.

Eleven iron door-keys found in builder's rubbish from old site of Town Clerk's Office, Barnstaple. Mostly, if not all, of the XVI Century.

Presented by Mr. T. CHARBONNIER, Barnstaple and Lynmouth.

Brass finial of the flag-pole of a local working-man's club, decorated with conjoined hands and surmounted by a crown.

Double-edged sword of the late XVII Century; the blade has a prominent ridge on one side and a deep groove on the other.

Banner carried by the Shoemakers at Wellington at the Coronation and Jubilee of Queen Victoria, 1837 and 1887. It bears the inscription, **BE FIRM TO THE LAST. CRISPIN CRISPIANA**, and the arms of the Company of Cordwainers, or Shoemakers, London.

Forty-two bowls of clay tobacco-pipes (some with portion of the stem), and seven heels of pipes with the maker's name impressed. XVII and XVIII Centuries. The seven heels are marked: **W.H.** (2); **W.H.**; **P.W. IN TANTON** (? R.W.); **PRAT. TAVNTON**; **E + C IN CHARD**; **E. C. TAVNTON**. Of the forty-two specimens, eleven have no maker's mark; the others are marked as follows: **WILLIAM HVN**, 3; **I. PRAT. TAVNTON**, 4; **R.W. IN TANTON**, 1; **E. C. TAVNTON**, 10; **E + C. IN CHARD**, 2; **GEO. WEB. CHARD**, 1; **GEO. WEBB IN**

CHARD, 2; GEORGE WEB., 1; E.L., 1; a rose, 1; and five uncertain.

John Pratt was a member of the Methodist Church. Before his marriage he was a servant in the house of John Wesley. Pratt's four sons and two daughters were born in Taunton between 1780 and 1793, and all were baptized at the Taunton Methodist Meeting House in 1795.

Presented by Mr. CHAS. TITE, Hon. Gen. Sec.

Two new glass shade-cases, for (1) Nairne's Patent Electrical Machine, and (2) Marble centre-piece made at the works of Mr. B. Jago, at the Lizard. (*See Som. Arch. Soc. Proc.*, vol. XLVIII, pt. i, pp. 77 and 79).—Presented by Mr. F. T. J. HAYNES, M.I.E.E., Taunton.

Large lock and key formerly belonging to one of the doors or gates of Ilchester Gaol (which was closed about sixty years ago).

It was bought by the donor in Oct., 1905, at the sale of Mr. Witcomb's effects at Lymington, near Ilchester, in whose possession it was for over thirty years; previously it was fixed to the Brewery cellar-door belonging to a Mr. Mills, who bought it when the Gaol was closed.

Presented by Mr. T. TREW, South Petherton.

Tourniquet—used to check hemorrhages—given out just before Lord Howe's Naval Action, June 1st, 1794. Given to the donor by Commander Tremlett, who was present as a midshipman.—Presented by Mr. E. W. VALENTINE.

Three iron door-keys, two being early XIX Century; one is a latch-key.—Presented by Mr. W. de C. PRIDEAUX.

Original iron clapper of a bell, inscribed HALLELVIAH, 1609. Taken from Thornfalcon Church, near Taunton, when a new clapper was introduced in 1904.

The bell was made by George Prideaux, of Salisbury, and is 30ins. in diam. (*Ellacombe's Church Bells of Somerset*, p. 84).

Piece of lead removed from the canons (crown) of the tenor

bell at Otterford, Somerset, during the restoration and rehang-  
ing of the bells, in 1904.

This bell was cast by Robert Norton, a bell-founder of Exeter during the reign of Henry VI; the bell is thus about 450 years old. There is no doubt that the bell-metal ran short and the canons being hollow, instead of solid, the lead was put in to fill up; but how it was accomplished is not clear, as it will be noticed that the lump is in layers, and not in one even block.

Presented by Mr. T. DOBLE, Taunton.

Iron weaving-comb, length  $8\frac{1}{4}$  ins., with nine teeth. Used at Wilton Carpet Factory, near Salisbury. (For comparison with the bone and horn weaving-combs found at the Glastonbury Lake Village).

Two wooden "weft needles," or "shuttles," used at Wilton Carpet Factory. Generally known as "needles," but practically speaking they are shuttles; they do not use any special kind of spool.—Presented by Messrs. YATES & Co., proprietors of the Wilton Carpet Factory.

Tin cup, or mug, with handle and spout; ? XVIII Century. Found in excavating at Pool Wall Factory, Taunton, 1904.

Horn drinking-cup, with wooden bottom; Somerset.

Presented by Mr. F. MARKS, Taunton.

Clay tobacco-pipe, found in Taunton, marked on the heel, **GEO. WEBB IN CHARD**; XVIII Century.—Presented by Mr. A. HAMMETT.

Combined clasp-knife and tin-opener, carried by a reservist of the Somerset Light Infantry during the Boer War, 1901-3.—Presented by Mr. H. HAWKINS, Taunton.

Bailer or scoop for clearing water out of a Maori canoe; New Zealand; made from *totara* wood.

The carved head exhibits a fine example of "the Tongue of Defiance." Given to the donor by Horo Haweā, a very old native at Matea Kipawa, and carved by Harry Kupa. (Figured and described in *Man* (Anthrop. Inst.), 1906, 5.

Presented by Mr. W. J. CULLEN, New Zealand.



Two charms used for warding off the Evil Eye in Naples. This type is generally seen hanging over the doorways of greengrocers' shops.

Two small, rough earthenware lamps, Naples.

The following cruel instruments used in driving horses, mules and oxen in Naples. A short time ago they were commonly used, but recently they have been suppressed to a certain extent by a society equivalent to our Society for the Prevention of Cruelty to Animals.

Three iron "horse-bits" with serrated edges, one (that with a hinge) having pointed studs as well; they are affixed to the harness under the jaw, as a substitute for a bit in the mouth. A similar instrument in brass with two hinges and three pointed iron studs. An ox-goad of similar character, fixed so as to press upon the soft part between the horns. Eleven iron and brass studs for rivetting to the goads. The above instruments are called *morsi a denti* (toothed bits); they are regarded as cruel, but those with the rivetted studs are called *morsi a denti a cimaruta*.

Iron instrument with a sixteen-pointed rowel at one end; fixed to the pole of carriages to prevent horses from rubbing. Naples.

Presented by Mr. F. T. ELWORTHY, F.S.A., Wellington.

The following objects from Travancore, Madras, India:—

Two leaden rings for the third toe; two rings for the big-toe; two small leaden finger-rings; seven leaden models of rings worn on the fingers and toes; black wooden ear-plug; three leaden weights, or rings, by means of which the lobe of the ear is distended in order that the large ear-plugs may be inserted; examples (in glass tubes) of two seeds much used by the natives as ornaments, viz., *Coonamuttoos* (Job's tears) and *Munjardies*.

Presented by Miss CLARA VICKERY.

Five Chinese playing-cards, sent from Siam.—Presented by Miss LYDIA HAMMETT.

Heavy horse's bit of iron, probably used in horse-breaking, with brass cap at each end marked "3 D." (? 3rd Dragoons).—Presented by Mr. W. J. GILES.

Pair of early XIX Century spectacles.—*Purchased.*

## III. CHINA AND POTTERY, AND GLASS.

Three plates, portion of a Staffordshire dinner service, *circa* 1800; printed with floral designs in light red, dark blue, and yellow.—Presented by the Rev. C. H. HEALE.

Pitcher, height  $4\frac{1}{4}$  ins.; yellow glaze on upper half. Probably made at Crock Street, Somerset. XVIII Century.—Deposited by Mr. H. FRANKLIN.

Clear, pale-green, glass flower-pot and saucer, made at the Nailsea Glass Factory, Somerset. *Circa* 1850.—Presented by Miss J. L. WOODWARD.

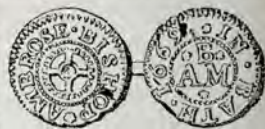
Beer glass of the late XVII or early XVIII Century, the bowl engraved with heads of barley, and tendrils, leaves and clusters of hops.—Presented by Mr. F. T. ELWORTHY, F.S.A., Wellington.

Glass wine bottle, with merchant's seal, **JOHN · GALTON · TAUNTON · 1715**. It came from an old farm near Banwell.—Presented by Mrs. LAURENCE, Weston-super-Mare.

## IV. NUMISMATICS.

XVII Century trade token of a previously unrecorded Bath type, found in the city of Bristol, Sept., 1904. (See accompanying illustration.)

*Obv.*:—**AMBROSE · BISHOP** = A cog-wheel. *Rev.*:—**IN · BATH · 1669** =  $\frac{B}{AM}$



—Presented by Mr. J. E. PRITCHARD, F.S.A.

Three ebonized mahogany cases with plate-glass fronts, containing a series of Electrotypes of Medals illustrating British History, commencing with Henry VIII. The series consists of ninety-eight medals, obverse and reverse being shown in all cases except six.—Presented by the TRUSTEES OF THE BRITISH MUSEUM (*per* Sir E. Maunde Thompson, K.C.B., *Director*).

Bronze medal, diam.  $1\frac{3}{8}$  in., struck in honour of Lord Nelson. *Obv.*:—Britannia with large anchor at feet, holding a laurel

branch in her right hand, and a shield in left hand bearing a bust of Nelson and inscribed, EUROPE'S HOPE AND BRITAIN'S GLORY. *Inscription round the medal:* REAR-ADMIRAL LORD NELSON OF THE NILE. *Rev.:*—Nelson's fleet. VICTORY OF THE NILE, AUGUST 1, 1708. ALMIGHTY GOD HAS BLESSED HIS MAJESTY'S ARMS. *On edge of medal:*—A TRIBUTE OF REGARD FROM ALEXR. DAVISON ESQR. ST. JAMES'S SQUARE. —Presented by the Rev. C. H. HEALE.

Sixpenny-piece of Elizabeth, 1573 ; found in the Exchequer Room over the entrance archway of Taunton Castle when a new floor was laid twenty years ago.—Presented by Mr. C. O. FOX.

French counter of the XV Century, found on the site of Taunton Priory. The inscription should read AVE MARIA GRACIA PLENA ; but only a portion of it is given, and even that is blundered. These counters were used for purposes of reckoning.—Presented by Mr. W. B. WINCKWORTH.

Penny, Edward IV, found in the railway cutting at the time of its formation across the Roman Road near Shepton Mallet.—Presented by Mr. A. CAPPER PASS.

One pound bank note, "Milverton and Taunton Bank," 1813 ; one penny Bristol token, 1811 ; XVII Century trade token of James Hopkins, Glastonbury, 1656 ; half groat of Henry VII, found in Taunton.—Presented by Mr. E. BAGEHOT KITE.

XVII Century trade token of the Borough of Chard, 1669, found in digging a drain at the donor's house at Wyke Champflower, near Bruton, 1905.—Presented by the Rev. A. T. MICHELL, F.S.A.

One penny token, Birmingham, 1813 ; three penny token, Wiveliscombe, 1814.—Presented by Mr. R. STONE, Taunton.

Small bronze medal of Admiral Vernon, 1739 ; one penny token, Bristol, 1811.—*Purchased.*

Thirty-three coins and tokens, chiefly of the late XVIII Century. They include a token of James Lackington, 1794.

*Rev.*:— **HALFPENNY OF LACKINGTON, ALLEN & CO. CHEAPEST BOOKSELLERS IN THE WORLD**=A Victory with trumpet and wreath.

Lackington was born at Wellington, 31st August, 1746, and died at Budleigh Salterton, 22nd November, 1815. In 1805 he came to Taunton and built and endowed a chapel.—*Dict. Nat. Biog.*, vol. 31, p. 370.

Presented by the Rev. FRANCIS STERRY.

United States 10 cent note, now obsolete; 5 cent piece, 1883, now obsolete; 5 cent piece, 1904.—Presented by Messrs. J. T. & W. T. ALLEN, Paterson, New Jersey.

#### V. MANUSCRIPTS, DRAWINGS, PHOTOGRAPHS, ENGRAVINGS, PRINTED MATTER, ETC.

Eleven framed portraits relating to Somerset, viz. :—

(1) Rev. J. H. Pinder, Principal of Wells Theological College, 1840 to 1865.

(2) The Earl of Cork and Orrery, K.P., P.C., Lord Lieutenant of Somerset, 1864 to 1904. Born April 19th, 1829; died June 22nd, 1904. President of the Som. Arch. and Nat. Hist. Society, 1875-6; Patron, 1898-1904.

(3) Professor John Quekett, of the Royal College of Surgeons of England. Born at Langport, 11th August, 1815; died at Pangbourne, 20th August, 1861.

(4) Vincent Stuckey, the founder of Stuckey's Bank. Born at Langport, 24th March, 1771; died at Langport, 8th May, 1845.

(5) Coloured illustration from *The Army and Navy Gazette*, August 5th, 1899, of military types of the West and North Somerset Yeomanry Cavalry, just before the uniform was changed.

(6) Mr. M. Fenwick Bisset, of Bagborough, for many years Master of the Devon and Somerset Stag hounds.

(7) Mr. W. P. Collier, for fifty-three years Master of the Culmstock Otter Hounds.

(8) Rev. John Russell, the "sporting parson," well-known master of foxhounds, who helped also to revive the Exmoor Stag-hunt. Born at Dartmouth, Dec. 21st, 1795; died at Black Torrington, 28th April, 1883.

(9) Arthur Heal, in 1886, Huntsman of the Devon and Somerset Staghounds, 1870-1889.

(10) John Southey Somerville, 15th Lord Somerville. Born at Fitzhead Court, near Taunton, 21st Sept., 1765; died at Vevay, 5th Oct., 1819. President of the Board of Agriculture. First Colonel of the West Somerset Yeomanry.

(11) Henry Harrington, M.D., D.D., musician and author. Born at Kelston, near Bath, Sept., 1727; died 15th Jan., 1816. Buried in Bath Abbey.

Three unframed portraits relating to Somerset, viz:—

(1) William Dampier, celebrated navigator. Born at East Coker, near Yeovil, 1652; died in London, March, 1714-15.

(2) John Hooper, Bishop of Gloucester and Worcester. Born at the end of the XV Century in Somerset. Burnt at Gloucester, 9th February, 1554-5.

(3) Fredk. William Collard, famous pianoforte manufacturer. Born at Wiveliscombe, 1772; died in London, 30th January, 1860.

Presented by Mr. CHARLES TITE, Hon. Gen. Sec.

Six water-colour drawings in white enamelled reeded frames.

(1) Stringston Cross, West Somerset, 1901; (2) Old Cottage on Bowling Green at Holford, 1899; (3) The Avenue, Alfoxton, 1899; (4) The Ruins of Kilve Chantry, 1902; (5) Alfoxton House from the Deer Park, 1898; and (6) The Sea-coast at Kilve, 1899. The two last were exhibited at the New English Art Club in Piccadilly.—Presented by Mr. W. A. RIXON, late of Alfoxton Park.

The following maps, etc., all surveyed and drawn by the donor:—Four plates of structural features, Worlebury Camp; original survey of Castlebatch, Worle-hill (E. end); original survey of Norton Fitzwarren Camp; ditto, Cadbury Camp,

near Wincanton; Dolbury Camp from a regular trigonometrical survey; the Abbot's Way, Burtle-heath (original drawing); and the original survey of the Stone Circle of Stanton Drew.—Presented by Mr. C. W. DYMOND, F.S.A.

Three coloured lithographs of old Sidmouth, in gilt frames measuring  $39\frac{3}{4}$  ins. by  $16\frac{1}{2}$  ins.—Bequeathed by the late Mr. EDWIN SLOPER, F.G.S.

Confirmation by Sir Richard St. George, Clarenceux King of Arms, of an alteration in their ancestral coat of arms to Sir William Parkhurst of East Lenham, Kent, Knt., Treasurer and Warden of His Majesty's Mint, and Robert Parkhurst of the City of London, Esquire, Alderman and elect Sheriff, 10th Sept., 1624. Shield and crest tricked in colours at side. Seal missing.—*Purchased.*

Small engraving of Roger Bacon, 1214 (?) to 1294, philosopher, born at or near Ilchester. Autograph letter of Charles Dickens, dated 19th September, 1848.—Presented by Mr. F. MARKS, Taunton.

Photograph of a sketch-map by the Rev. John Skinner (*circa* 1840) in the British Museum, entitled "The Belgic British Settlement on Hampton Down." Photograph of inscribed paten,  $6\frac{3}{8}$  ins. diam., Claverton Church; *Translation of Inscription*: "Behold the Lamb of God which taketh away the sins of the world."—Presented by Mr. T. S. BUSH, Bath.

Reprint from *Archæologia*, Vol. XI, on "Observations on an antient Cup formerly belonging to the Abbey of Glastonbury." By the Rev. John Milner, F.S.A. With full-plate illustration of the vessel (two views).—Presented by Mr. H. FRANKLIN.

A set of measured drawings of Stavordale Priory, near Bruton.—Presented by the owner of the Priory, Mr. F. G. SAGE.

The following papers have been presented by Mr. E. CLATWORTHY:—

No. 129 of the *Taunton and Bridgwater Journal*, Sept. 11, 1813; No. 3022, Vol. 57, of the *Dorchester, Sherborne and Taunton Journal*, May 24,

1821; Sir T. Buckler Lethbridge's Speech in the House of Commons, from *The Times*, Feb. 2, 1821, printed by Bishop, Taunton; sheet entitled "Old Father Christmas, or a new play for the Christmas Holidays," printed by Nott, High Street, Taunton; bill entitled "To be seen alive! Before the Assizes, near the Market Place, Taunton, the following rare and curious collection of Animals, etc.," printed by Marriott, Taunton; sheet entitled, "A true copy of a Surgeon's Bill," dated Waterford, Sept. 2, 1816; almanack for 1688, by John Goldsmith, in form of a small pocket-book bound in parchment, green and gold.

Copy of the Recovery Roll relating to Sutton Montis, 1693; case of a disputed Election at Milborne Port, 1747; and a deed relating to the Angel Inn, Back Lane, Shepton Mallet, 1730.—Presented by Mr. W. MACMILLAN.

Parchment-bound book entitled, "A thousand Notable things of sundrie sortes," Lond., printed by E. All-de for N. Fosbrooke by the Assignes of Io. Wright and R. Bird, 1627.—Presented by Mrs. E. MORGAN SMITH.

Photographic bromide enlargement of Mr. HUGH NORRIS, of South Petherton, at the age of 84 years. (*Purchased*).

Illustrations of extinct mammalia found in Wyoming. *Suppl. Illustrated Lond. News*, Dec. 17, 1904.—Presented by Mr. S. LLOYD HARVEY.

## VI. NATURAL HISTORY.

### (1). ANIMALS, ETC.

Mammoth's tusk found on Kilve shore, Somerset, near the mouth of the Pill stream, Feb., 1899.—Presented by Mr. W. A. RIXON.

Peacock, in case.—Presented by Mr. J. BRICE BUNNY, Bishops Lydeard.

Stuffed Australian parrot.—Presented by Miss CODRINGTON, Taunton.

Small collection of British Birds' Eggs.—Presented by Mr. T. S. DERHAM.

Nest of a large trap-door Spider.—Presented by Mr. E. BAGEHOT KITE.

Nest of the Indian Weaver Bird, from the neighbourhood of Travancore, Madras.—Presented by Miss CLARA VICKERY.

(2). ROCKS, MINERALS, FOSSILS, ETC.

Portion of the Geological collection of Charles Moore, F.G.S., (born at Ilminster, 1815-1881), chiefly duplicates of the fossils in the Moore Collection in the Geological Museum at Bath. The Bath collection was purchased from Mrs. Moore, and the remainder of his collection—duplicate and other specimens—she gave to the Rev. H. H. Winwood. It is the greater part of these later which have been presented to the Som. Arch. and N. H. Society, by the Rev. H. H. WINWOOD, F.G.S.

Three pieces of a natural heavy concretion of stone, etc., strongly cemented together by carbonate of lime. Found in making the new Langport and Somerton Railway, 1905, at Green Down, Charlton Mackerell.—Presented by the Rev. PREB. G. E. SMITH.

Four specimens of *Gryphæa incurva*, from the lower lias; found seven feet deep on Pickeridge Hill, near Taunton.—Presented by Mr. J. TEMPLEMAN.

*Pecten aequalis* from the marlstone, Ilminster; two specimens of blue and green fluor-spar; quartz crystals with iron ore.—Presented by Mr. E. BAGEHOT KITE.

Piece of kidney iron-ore; polished half of an ammonite, etc.—Presented by Miss GAPPER.

## VII. WALTER COLLECTION.

The following objects have been deposited on loan by Mr. R. HENSLEIGH WALTER, of Stoke-under-Ham:—

Finely-decorated post-Roman (?), hand-made bowl with a representation of a human face probably intended for the sun on the bottom of the interior surface. The sides are decorated with a row of interlocked and reversed spirals each surrounded by radiating lines; there is a similar ornament on the bottom of



the vessel. On the outside of the rim is a horizontal row of small rectangular punch-marks enclosing circles; the same thing occurs on the inside of the rim. Height  $3\frac{1}{8}$  ins.; max. ext. diam. at rim  $5\frac{3}{4}$  ins. Found by a workman named David Dodge in the spring of 1896, while "rubbling" in a now-disused small quarry, quite close to "Ham Turn," at the back of the "Prince of Wales" Inn, Ham Hill, S. Somerset; in black earth, about 12 feet below the surface, with flints. The plates of scale-armour (*lorica*) in the "Walter Collection" were found within a stone's throw of this bowl. Dr. A. J. Evans, of the Ashmolean Museum, Oxford, believes the bowl to be very late British and post-Roman. He says that "the head in the centre recalls the 'saucer' fibulæ of the Central Saxon district, similar heads appearing in the middle of these; they were probably made under a surviving British influence."

Pair of bronze tweezers, found at "Ham Turn," Ham Hill, 1905.

Small bronze fibula with semicircular bow, small catch-plate and knobbed tail; with partially defaced inscription; Roman. Found at Tor Point Quarry, north-west corner of Ham Hill, 1905.

Heavy bronze harness-ring, containing a large percentage of tin; probably dating from the Prehistoric Iron Age. Found as the last.

Well-preserved bronze needle, length 60.5 mm., with small circular eye; probably British of the Roman period. Found at "Ham Turn," Ham Hill, 1905.

Disc or plaque, diam. 20.5 mm., possibly an ornament belonging to a Late Celtic shield of the character of the famous one found in the Thames at Battersea, and now in the British Museum. The framework of the disc is of bronze, two of the radiating bands on the upper face being straight, the other two representing the step-pattern. The interspaces are filled with what appears to be decayed enamel or fused pigmented silica of two shades of red. Found at the north-west corner

of Ham Hill, near the ramparts; depth 7ft., in black earth. April, 1905.

Camera lucida, Wollaston patent, *circa* 1810.

Four snuff-boxes, of the early and middle XIX Century; (1) corrugated white-metal box; (2) circular papier-mâché box with coloured picture on the cover representing a scene from Robert Burns's "Tam-o-shanter"; (3) circular papier-mâché box, with military scene on the cover and a French inscription; (4) oblong papier-mâché box, with hinged lid on which a river scene is depicted.

Tea-caddy made from a mulberry-tree said to have been planted by Wm. Shakespeare. The following is the inscription:—

"This casket though humble was made from the tree,  
Which Oh! my dear Shakespeare was planted by thee."

When the mulberry-tree, said to have been planted by Shakespeare, was blown down, it was bought by Thomas Sharp, a watchmaker of Stratford (died Nov., 1799). He cut it up in blocks of various sizes for sale at about a guinea each. Several were purchased by Lord Seagrave of Berkeley Castle, one of which he gave to the Rev. T. B. Naylor, who kept it for some years, and on going to Tasmania in 1834, he presented it to Mr. Richard Walter, who had it made into a tea-caddy.

The following objects, presented by Mr. R. HENSLEIGH WALTER:—

(1) RELICS FROM HAM HILL, SOUTH SOMERSET.

Objects (mostly of the Prehistoric Iron Age) found together at "Ham Turn" in 1905:—(1) Haft of antler, for hafting a celt; (2) cheek-piece of horse's bit formed from antler, similar to those found in Glastonbury Lake Village; (3) point of a deer-tine showing marks of the saw; (4) a sling-stone, one of sixty found together; (5) soft stone whorl; (6) smooth, rounded piece of flat pottery, probably used in a game; (7) piece of pottery with a circular perforation; (8) small flint scraper; (9) six flint flakes; (10) two chert hammer-stones and a whetstone; (11) four large holed-stones, more or less circular, of Ham Hill stone; (12) first brass coin of Claudius I,

A.D. 41-54 (bad specimen); (13) five pieces of Late Celtic pottery, similar in decoration to other pieces from Ham Hill, and to many examples from the Glastonbury Lake Village; (14) five other fragments of British pottery of the early Roman period, including an eyelet or loop; (15) tooth of horse, boar's tusk, and portion of a pig's jaw.

The following objects found at "Ham Turn" during 1905:—

Fragment of bronze bordering, probably of the Prehistoric Iron Age.

Bow, head and tail of a bronze fibula of Roman Provincial type, with ornamental piercings in the catch-plate; the pin was in a separate piece to the rest of the fibula.

Lower end of an iron sickle.

Rough, soft, holed stone; perhaps a spindle-whorl.

Iron chisel, in two pieces.

Two holed stones, of Ham Hill stone.

Two small well-finished flint scrapers.

Spherical ball of flint, worn smooth from prolonged use.

Half a smooth black earthenware spindle-whorl.

Large circular piece of earthenware; perhaps used in a game.

Worked flint flake, length 2ins.; and portion of a flint knife.

A quantity of fragments of Romano-British pottery.

Lower stone of a quern, diam. 12½ins. (in two pieces).

Baked clay fusiform sling-bullet.

Two flat discs of Ham Hill stone, one having an incipient central hole; small whetstone of indurated sandstone; five flint flakes; large iron penannular ring, much corroded (found 14ft. below the present surface). All found in Nov., 1905.

The following found at the north-west corner of Ham Hill, near the ramparts, April, 1905:—

Ornamental tin disc, circular, 31 mm. diam., with two concentric ridges round edge, one decorated with small raised dots.

Six pieces (and several smaller fragments) of thin bronze,

all bearing evidence of having been punched with lines of small circular perforations in sweeping curves of Late Celtic style.

Small bronze ring.

A long, bronze nail with hollow, circular, head, similar to the rivet-heads found in the Glastonbury Lake Village.

Five fragments of thin bronze bordering.

Iron square-headed point of a spear resembling the point of a Roman pilum but without the long shank of that weapon. (Compare "Excavations in Cranborne Chase," vol. II, p. 133, Pl. CIV, figs. 12, 13).

Base of a black Romano-British pot; portion of "corrugated" pottery handle.

Romano-British pottery spindle-whorl, etc.

The following objects from Tor Point Quarry, north-west corner of Ham Hill:—

Piece of bronze bordering.

Spindle-whorl of Ham Hill stone.

Bronze ring, of oval cross-section, ext. diam. 28 mm.

Thin bronze button.

Middle portion of a chipped leaf-shaped arrowhead.

Small fragment of red Samian ware.

Small flint scraper, flint flakes, and several fragments of Romano-British pottery.

The following objects from various parts of the hill:—

Three fragments of Romano-British pottery, flint scraper, and a burnisher from the south-east part of the hill, depth 7ft.

A few fragments of Romano-British pottery, portion of a Roman tegula, and a sling-stone, found at Bedmore Barn.

Lead cast of an uninscribed British coin.

## (2.) MISCELLANEOUS OBJECTS.

Piece of Ham Hill stone showing signs of burning; found in excavating at "The Trutts," Stoke-under-Ham, Dec., 1905.

Two glazed tiles dug up (depth 6ft.) in the new portion of

the churchyard attached to St. Catherine's Church, Montacute on the supposed site of the Cluniac Priory of SS. Peter and Paul.

Seven small barbed and tanged flint arrowheads, all more or less incomplete, found on the surface of Chadlington Downs, Oxon.; obtained by the Rev. R. E. W. Cosens.

Gutta-percha cast of a late-Celtic brooch found at the Settle Caves, Craven, Yorks.

Two earthenware globular jugs, partly glazed, with handles, but no lips to facilitate pouring. One is ornamented with dark brown circular dots; the other with oblique, parallel, brown streaks. Early XIX Century.

Large glazed jug, height 9ins., yellowish-drab and white. Among the raised subjects which ornament the sides is a figure of Admiral Viscount Hood (1724-1816), and Admiral Baron Rodney (1719-1792). The jug is therefore probably a commemorative one of the end of the XVIII Century.

Portion of a mast of Nelson's "Victory."

Embossed invitation card to the banquet at the Guildhall on the occasion of the Coronation of Queen Victoria.

Sealing-wax case, holder and seal combined. Early XIX Century.

Plain constable's staff; painted white.

Trephining instrument. Early XIX Century.

Dental instrument. Early XIX Century.

Leather powder flask, middle of the XIX Century; used by Dr. W. W. Walter in the days of muzzle-loading.

Sporting rifle cartridge, used by the Boers in the South African War, 1901.

Mauser clip taken from the body of a Boer commandant at Wepener.

Fragment of Ladysmith siege biscuit served out on the last day of the siege to the Rev. Arthur Horder.

Boer tobacco taken from the body of a commandant killed at Wepener.

Map of proposed English and Bristol Channels' Ship Canal, 1824.

Framed photograph of the memorial brass to Walter Winter Walter in the church at Stoke-sub-Hambdon.

Photograph of the Jacobin badge which belonged to the donor's grandfather, Richard Walter.

A large number of these badges were distributed and worn on the inside of the crown of the hat by the Jacobins of England at the time of the French Revolution of 1793, when the wearers were known and addressed by the title of "Citizen." The original of the photograph was worn by Richard Walter when a lad.

Early photograph (Talbot-type), *circa* 1850, of "Newhaven Fishwives," by Mrs. D. O. HILL; also two other faded Talbot-types of the same date.

#### VIII. NORRIS COLLECTION.

Full particulars of the "Norris Collection" will be found in Part II, pp. 136-159.