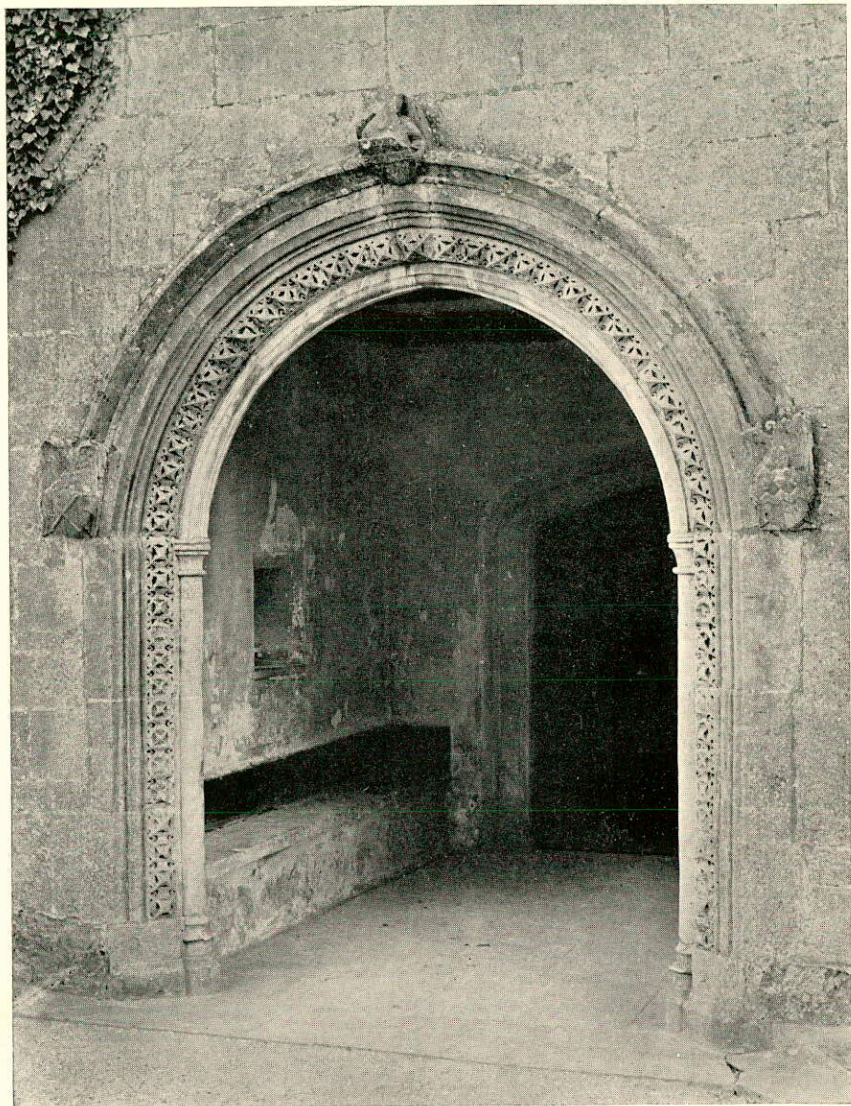


Somersetshire
Archæological & Natural History
Society.

PROCEEDINGS
DURING THE YEAR 1922.

VOL. LXVIII.

The Council of the Somersetshire Archæological and Natural History Society desire that it should be distinctly understood that although the volume of PROCEEDINGS is published under their direction, they do not hold themselves in any way responsible for any statements or opinions expressed therein ; the authors of the several papers and communications being alone responsible.



PORCH, CONGRESBURY VICARAGE.

From a Photograph by Dr. F. J. Allen.

PROCEEDINGS
OF THE
Somersetshire
Archaeological & Natural History
Society

FOR THE YEAR 1922

(ANNUAL MEETING, CLEVEDON).

VOL. LXVIII.



Taunton:

PRINTED FOR THE SOCIETY

BY

BARNICOTT AND PEARCE, THE WESSEX PRESS

MCMXXIII.



PREFACE.

IN the present volume of the Society's *Proceedings* more space than usual has been given to the Excursion Notes, and we hope that this will be appreciated not only by those who took part in the excursions, but also by those who are interested in the topography of the county, and use the volume as a book of reference.

In the first place the thanks of the Society are due to Dr. A. C. Fryer for defraying the entire cost of the reproduction and printing of the photographs of the monumental effigies given in Plates VIII to XVII. In addition the Society owes its thanks to:—Mr. John Morland for his contribution towards the cost of the plates illustrating his paper on the Brue Valley; Mr. Francis Were for the two plates accompanying his paper on the Abbot's Leigh tombs; Lt.-Commander C. E. Evans for the two illustrations of Nailsea Court; the Rev. Dom. Ethelbert Horne for the block of the sculptured stone in Burrington Church; Dr. F. J. Allen for his photographs of Nailsea Court (1891) and the porch of the old Vicarage at Congresbury; Mr. Roland Paul for the drawing and block of the shields on the Congresbury porch; the Society of Antiquaries of London for the loan of the two blocks illustrating the Keynsham coffins; and the Spelæological Society for the loan of the block illustrating some of the objects from Aveline's Hole.

These contributions have helped to make this one of the most fully illustrated volumes issued by the Society.

For the Editorial Committee,

G. W. SAUNDERS (*Chairman*).

H. ST. GEORGE GRAY (*sub-Editor*).

TAUNTON CASTLE,

March, 1923.

POSTSCRIPT.—The Editorial Committee wishes to thank Mr. H. St. George Gray for his work in preparing the volume for the press and the compilation of the Index.