

Monumental Brasses in Somerset

PART XVIII

BY ARTHUR B. CONNOR, F.S.A.

BATH ABBEY

I.—*Sir George Ivy of West Kington, Wilts., Knight [1639] in armour, and wife Dame Susanna, youngest daughter of Laurence Hide of Westhatch, Wilts., esq., and sister to Sir Nicholas Hide, Knight, late chief justice of the King's bench ; with four sons, (1) Thomas, married Lettes, daughter and co-heir of Sir Martin Colpeper of Oxon., Knight ; (2) Palmer (in armour), 'slaine in ye Venetian warrs in ye Ile of Corffue' ; (3) George, clerk, married Elizabeth, daughter of William Winter of Somerset, esq. ; and (4) Robert (in armour) 'died in ye Netherlands at ye seige of Bredah ; and four daughters : (1) Elizabeth (deceased) married John Aprice of Chilterne, Wilts., gent. ; (2) Anne (deceased) married Richard Eastcourte of Somerford, Wilts., gent. ; (3) Avis, married Foulke Hungerford of the Leah, Wilts., gent. ; and (4) Barbara, married Thomas Wall of Gerimboye, Limerick, gent. ; all kneeling ; rectangular plate, with inscription and two shields with crests. On the south wall of the chancel.*

The brass consists of a rectangular plate, 23 in. by 23 in. The centre is occupied by a long inscription in Roman capitals, above which are two shields with crests, but no mantling. Between the crests in Roman lettering,

o quam dulce
in Christo
mori

On either side are the kneeling figures of Sir George Ivy on the dexter, and Dame Susanna on the sinister. Smaller kneeling figures of the sons on the dexter, the daughters on the sinister, flank the inscription.

The inscription runs as follows in twenty-one lines of Roman capitals, and two lines of quotation from Psalm lxxxiv, 10.¹

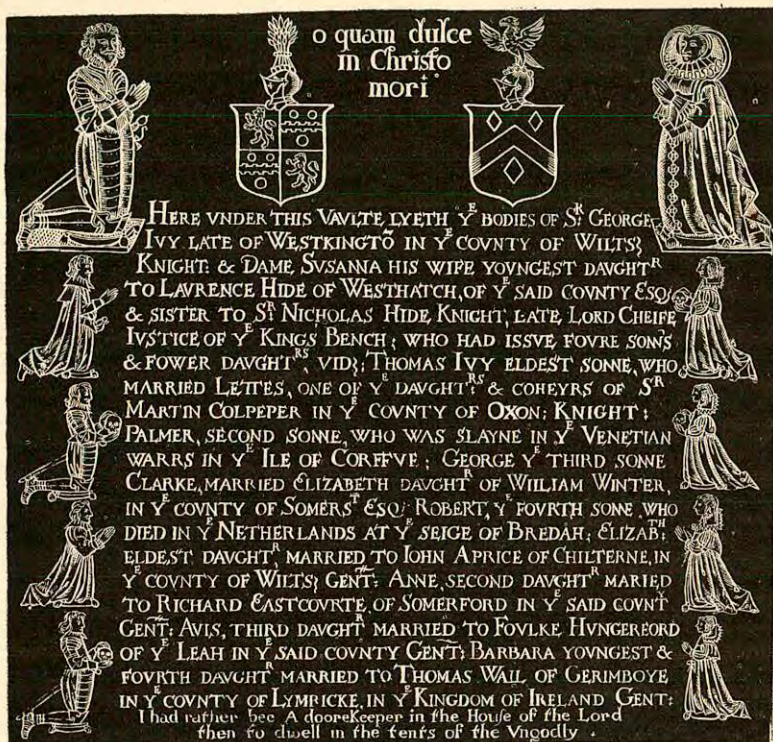


Fig. 3. Sir George and Dame Susanna Ivy, with family [1639]. No date.

HERE VNDER THIS VAVLTE LYETH Y^E BODIES OF S^R GEORGE IVY LATE OF WESTKINGTŌ IN Y^E COVNTY OF WILTS} KNIGHT: & DAME SVSANNA HIS WIFE YOUNGEST DAUGHT^R TO LAVRENCE HIDE OF WESTHATCH, OF Y^E SAID COVNTY ESQ; & SISTER TO S^R NICHOLAS HIDE KNIGHT, LATE LORD CHEIFE IVSTICE OF Y^E KING'S BENCH; WHO HAD ISSVE FOVRE SONNS & FOWER DAUGHT^{RS}, VID{ : THOMAS IVY ELDEST SONNE, WHO MARRIED LETTES, ONE OF Y^E DAUGHT^{RS} & COHEYRS OF S^R MARTIN COLPEPER IN Y^E COVNTY OF OXON: KNIGHT: PALMER, SECOND SONNE, WHO WAS SLAYNE IN Y^E VENETIAN

¹ 10 in the Bible version, 11 in the Prayer-book version.

WARRS IN Y^E ILE OF CORFFVE ; GEORGE Y^E THIRD SONNE
 CLARKE, MARRIED ELIZABETH DAUGHT^R OF WILLIAM WINTER,
 IN Y^E COVNTY OF SOMERS^T ESQ } ROBERT, Y^E FOVRTH SONNE, WHO
 DIED IN Y^E NETHERLANDS AT Y^E SEIGE OF BREDAH ; ELIZABTH :
 ELDEST DAUGHT^R, MARRIED TO IOHN APRICE OF CHILTERNE, IN
 Y^E COVNTY OF WILTS } GENT : ANNE, SECOND DAUGHT^R MARRIED
 TO RICHARD EASTCOVRTE, OF SOMERFORD IN Y^E SAID COVNT^V
 GENT : AVIS, THIRD DAUGHT^R MARRIED TO FOVLKE HVNGERFORD
 OF Y^E LEAH IN Y^E SAID COVNTY GENT : BARBARA YOVNGEST &
 FOVRTH DAUGHT^R MARRIED TO THOMAS WALL OF GERIMBOYE
 IN Y^E COVNTY OF LYMRICKE, IN Y^E KINGDOM OF IRELAND GENT :

I had rather bee A dooreKeeper in the House of the Lord
 then to dwell in the tents of the Vngodly.

The stops are represented thus + throughout.

Sir George Ivy kneels to the sinister on a tasselled cushion, placed on an oblong mat. He wears rather long, curly hair, and a small pointed beard and moustache. A ruff is worn round the neck, and turned-back cuffs at the wrists. The hands are bare. The armour is similar to that worn by Edmund Windham.² The sword hangs diagonally from the left hip to the heels, suspended by a strap from the right shoulder. The second and fourth sons, both of whom hold skulls, are attired like their father, but for falling collars in place of the ruff. The elder has a small pointed beard and moustache. The eldest son wears civilian costume, doublet and hose covered by a long cloak with a deep collar. At the neck is a deeper falling collar than those of his military brothers. The hilt of his sword is seen at the left hip. The third son is clean-shaven. He wears an ample gown with small ruffles at the wrists and a falling collar.

Dame Susanna kneels to the dexter. She wears a close-fitting French hood, surmounted by a large calashe springing from the shoulders, brought to a peak in the centre of the forehead, with a long veil floating behind. A large falling collar is worn on the neck. She wears a tight bodice, peaked in front, cut low to show the partlet of pleated linen. Fall-back cuffs are worn at the wrists. The skirts appears to be divided, and brought together by a vertical row of rosettes. An ample sleeveless gown is worn over all.

² At St. Decumans, illus. *Som. Proc.* xciii, Pl. IX.

The daughters, the two eldest of whom hold skulls, wear their hair combed over their foreheads and side-curls, with small flat caps at the back of the head. They wear large Vandyck collars. The sleeves of the bodice are puffed. Their overgowns have small capes attached.

Between the two main figures are the two achievements of arms, without mantling.

Dexter.—(Arg.) a lion rampant (gu.).—Ivy of Oxford and West Kingston, Wilts.

Crest:—A garb(or).

Sinister.—(Az.) three lozenges (or).—Hyde.

Crest:—An eagle volant.

Sir George Ivy was the son of Thomas Ivy of West Kingston, Wilts. He was Knighted at Greenwich 2 April 1605. He married Susannah, youngest daughter of Laurence Hyde of West Hatch and wife Anne, daughter of Nicholas Sibell of Kent, widow of Matthew Colthurst, of Claverton, Somerset. She is represented on the brass to her father's memory at Tisbury, Wilts., which is illustrated in *The Monumental Brasses of Wiltshire*, by Edward Kite, Pl. XXVI. She was buried in Bath Abbey, 18 February 1638. The brass is not dated, but we learn from the Abbey registers that Sir George was buried 1 April 1639. He left a noncupative will, dated 30 March, proved 6 July 1639 by his son Thomas, made in the presence of his eldest son Thomas and his daughter Barbara Wall. *Browns Wills*, III, 7. His son Thomas matriculated at Balliol College, Oxford, 6 July 1613, aged 15. He married Lettes, daughter of Sir Martin Colepeper of Oxfordshire. She died in 1646, and was buried at Spilisbury, Oxon. Sir Thomas died in 1642, and was buried in Bath Abbey. The registers describe him as of Malmsbury.

George, the third son, matriculated at Christ Church, Oxford, 8 May 1618, aged 16. B.A. from Broadgates Hall (now Pembroke College) 29 November 1620; M.A. 18 June 1623. He was instituted to the Rectory of Clapton-in-Gordano, Somerset, 1626, patron William Winter, esq., whose daughter Elizabeth he married. *Foster's Alumni*. He died in 1635.

à Wood describes this brass as 'at or towards the west end of the South Isle, joining to the body.'

II.—*Inscription ; Jane, wife (1) of Nathaniel Still, (2) of Henry Dennys, esq., 1639. On the south wall of the chancel, under No. I.*

The inscription, which measures $14\frac{1}{4}$ in. by $23\frac{1}{4}$ in., consists of twelve lines in Roman capitals.

SVB HOC MARMORE SACRĒ QUIESCUNT CINERES IANÆ, PRIMO NATHANIELIS
STILL, DEINDE HENRICI DENNYS, ARMIGERORVM, SVAVISSIMÆ PARITER
AC ORNATISSIMÆ CONSORTIS. FILIAS (PERCHARA STILLI PIGNORA)
QVATVOR NVMERAVIT, SEXV TANTVM FÆMINAS, VIRTVTĒ VIROS ; QVIBVS
ET IPSA ALTER FVIT PATER, ET SVB BLANDIORI GENETRICIS NOMINE
GENITORIS PARTES AGEBAT. FORTIVS AMANDO STVDIOSIVS PROSPIENDO,
ACCVRATIVS, IMO DIVINIVS INSTITVENDO. ILLIS PRÆCEPTA CONCORDIÆ,
MODESTIÆ EXEMPLIVM NOBIS OMNIBVS PIETATIS, RELINQVENS, MVNDO
HVIC (VTI MORIBVNDÆ CYGNEA VOCE CECINIT) TVRPĒ ET
TYRPANTĒ QVEM SEMPER CONTEMPSIT, TANDEM VALEDIXIT,
ET LETHARGIVM SOROREM IN SOMNV MVTAVIT CHRISTIANVM.

DECEMB : 10 : 1639

In line five in the word FVIT, A has been altered to V. In line seven in the word ACCVRATIVS, the second V was first engraved M.

In Hutton Church, on the west wall of the south aisle, there is a tablet of touch, engraved like a brass, and wrongly described as such in Knight's *Seaboard of Mendip*, 371, to the memory of Jane's first husband, Nathaniel Still, son of John Still, Bishop of Bath and Wells. Nathaniel and Jane are represented kneeling at a prayer-desk, on which lie two open books. One son kneels behind his father, and four daughters behind their mother. Nathaniel Still died 2 February 1626.

Jane, sister of Sir William Whitmore, Knight, of Apley, Co. Salop, and daughter of William Whitmore, Alderman of London (ob. 1593), son of Richard Whitmore, esq. of Cloverly, Co. Salop, born about 1587 ; aged 23 in 1610, married (1) Nathaniel, eldest surviving son of John Still, D.D., Bishop of Bath and Wells and his first wife, Anne, sister of John Albaster. He was baptized at Hadleigh, Suffolk, 18 October 1579, aged 30 in 1610, died intestate 2 February 1625-6, and was buried in the chancel of Hutton Church, Somerset. Jane married (2) Henry Dennis of Pucklechurch Hall, Co. Gloucester, esq. By her first husband she had one son, who died in infancy, and four daughters,—Ann Still married John Codrington of Didmarton, co. Gloucester, aged 10 in 1623.

Jane Still married Sir James Pyle, Bart., of Compton Beauchamp, Berks., aged 9 in 1623, died about 1639.

Elizabeth Still, aged 5 in 1623, living in 1639.

Another daughter.

Jane Dennis died 10 December 1639, as recorded in the inscription. Jewers, *Monumental Inscriptions and Heraldry. Wells Cathedral*, 148.

III.—*Inscription (kneeling female effigy with two children lost) ; Mary, wife of George Reeve, goldsmith, 1664, Spencer his father, Katherine his mother, Spencer first son, George second son, Henry third son, and Spencer fourth son ; with four English verses and emblems of mortality ; on the wall of the south aisle.*

The inscription consists of four lines, four lines of English verse, and a final line recording the date ; at the dexter bottom corner a large skull with crossbones ; at the sinister corner a skull on a winged hourglass.

It measures $6\frac{1}{2}$ in. by $15\frac{5}{8}$ in. The Roman lettering is crude. All the lines are filled with red colouring matter.

Neare to this place lyeth the body of mary late wife of george Reeue, goldsmith of this citty (and alsoe of spencer his father and of katherin' his mother) and of spencer his first sonne and of george his second s and of henry his third sonne and of spencer his fowrth sonne

So that you see gaynst deaths allconquering hand

Skull	Nor sex nor age agaynst his force can stand	Skull on
and	But ther's a tyme wherein our body's must	winged
crossbones	Reviue agayne though now turn'd into dust	hourglass
	shee departed this life ; iuly: 3 th 1664'	

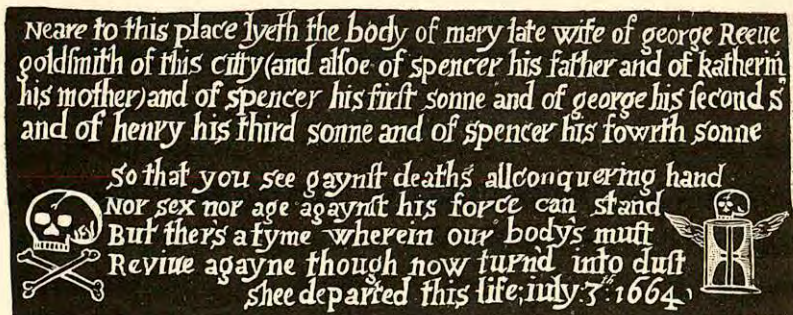


Fig. 4. Mary Reeve and family, 1664.

à Wood says, 'In the body of the church. On a pillar next below the pulpit is the p'portion of a woman kneeling

with a hat on her head, between two children, & under them on a brass plate is written :(as above)—on a flat stone und'neath (of marble) Georg Reeve, goldsmith, one of ye Com'on Councell of y^e citie; ob. 23 Sept. 1677, aet. 53.

Ar'es are—Chev. betw. 3 pair of wings.'

IV.—*Inscription; Walter Coppinger, surgeon to Her Majesty's Yacht, Charlotte, 1704, aged 50. 'Tho. Boddely, Bath Fecit'. On the floor of the south aisle.*

The inscription, which measures 8 by 11 in., lies in its original slab, which has been cut down. It consists of six lines, and two more with the name of the engraver. It is in large Roman capitals.

HERE LYETH Y^E BODY
OF WALTER COPPINGER
CHIRURGEON TO HER
MA^{TIES} YAICH^T Y^E CHARLOT
WHO DYED Y^E 8TH OF AUG
1704 AGED ABOUT 50
THOMAS BODDELY
BATH FECIT

IV.—*Inscription; Anna Maria, daughter of Morgan Lloyd of Llanseven, Co. Carmarthen, esq., and wife Bridget, 1738. 'Cornelius Dudley Bristol, fecit.' On the south wall of the chancel east of No. I.*

The inscription consists of twelve lines in Roman lettering, and one more with the engraver's name.

Underneath Lyeth y^e Remains
of ANNA MARIA LLOYD only
Daughter of MORGAN LLOYD,
of LANSEVEN in the County
of CARMARTHEN ESQ^R.
(And BRIDGET his wife)
She was born Aug: 8th, 1719
and died June 3^d 1738

MONUMENT
erected to her memory
at LLANGADOCK CHURCH
in the COUNTY aforefaid.

Cornelius Dudley Bristol fecit.

The Vicar of Llangadock, the Rev. J. Owen-Jenkins, has most kindly written to say that the monument mentioned is of white marble, with an impaled coat of arms at the top. It is situated on the wall of the north transept. The inscription is as follows :—

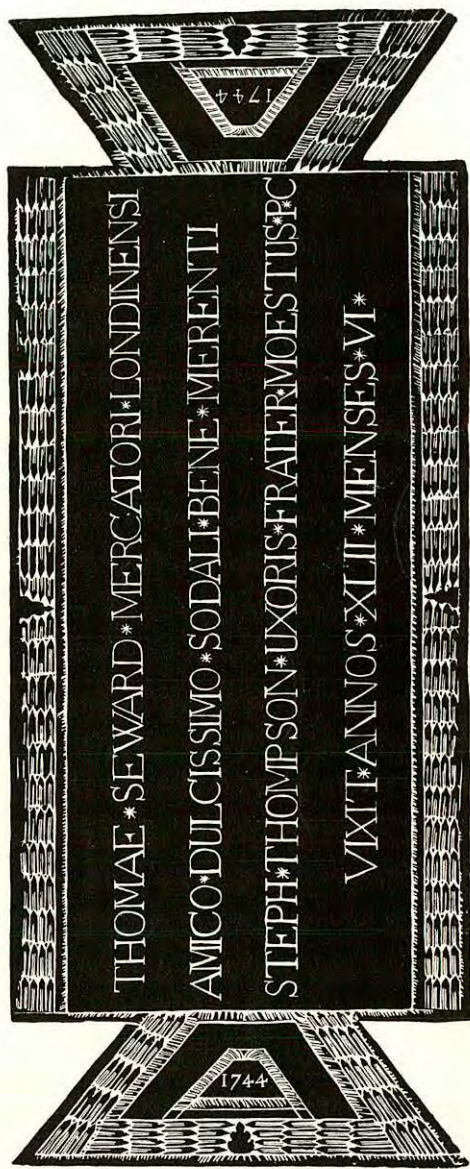
To the Pious Memory
of Mifs ANNA MARIA LLOYD
only daughter of MORGAN LLOYD of
LANSEVIN esq̄ & Granddaughter of DAVID
LLOYD OF WERN in ye County of CARDIGAN
Esq̄ who made that Progress in Virtue
at sixteen Few arrive at in sixty years.
She ran through all the instances of
Duty to God and her Neighbour (too
numerous for a present Detail) with
that Ease of her Self, and Satisfaction
to others, as clearly Confutes our
Reasonings of ye Difficultys of a Christian
Life, when amidst all the Abatements
of Youth, Sex and Sickness
She has Undeniably proved that the
Ways of Religion are ways of Pleasant-
ness, and all her Paths Peace.
She died at BATH the third Day of
JUNE 1738 : Aged Nineteen Years.
(whose Remains Lye Interred in the
Abbey there).

Morgan Lloyd was High Sheriff of Carmarthen in 1732, and a member of the Sea Sergeants, a Jacobite society prominent in West Wales at the time, in 1733. *History of Carmarthen-shire*, Ed. J. E. Lloyd, 1939.

V.—*Inscription ; Robert Watts, Esq., of Barns Hall, near Sheffield, 1739, aged 65. ' Knight, Bath Fecit.' On the north wall of the recess on the south of the great west door.*

Inscription of three lines in mixed script and Roman lettering, 7 in. by 18½ in., with one more, containing the engraver's name.

Rob^t Watts Esq: of BARNS
HALL near SHEFFIELD in
YORKSHIRE, who Died 18: NOV: 1739 Aged 65
KNIGHT, BATH FECIT



Thomas Seward, Merchant of London, 1744.

VI.—*Inscription ; Thomas Seward, merchant of London, 1744, aged 42 and 6 months ; his brother-in-law Stephen Thompson pos. On the floor of the nave.*

The inscription, which has an ornamental border of conventional leaves, measures $9\frac{3}{8}$ in. by 18 in., with strange triangular additions, each containing the date 1744, at either end, each measuring $9\frac{1}{8}$ and $5\frac{1}{8}$ by $3\frac{3}{4}$ in. It consists of four lines of Roman capitals with a star between each word :—

THOMAE * SEWARD * MERCATORI * LONDINENSI
AMICO * DULCISSIMO * SODALI * BENE * MERENTI
STEPH * THOMPSON * UXORIS * FRATER * MOESTUS * P * C
VIXIT * ANNOS * XLII * MENSIS * VI *

Although the brass lies in the centre of the nave, and the stone has crumbled, leaving the metal raised above it, the surface is very little worn.

LOST BRASSES

The following were noted by Anthony à Wood in the years 1676 and 1678 ;—(*MS. in the Bodleian Library*).

- I.—‘ On a Brass Plate, fix’d to a stone lying on ye Ground, (S. side of the Chancel.) Sr. Robert Craven, K^t, sometimes M^r of the horse to the Queen of Bohemia (sister to Charls I), died 4 Oct. 1672, aet. 40, Ar’es are fess between 6 cross crosslets fitch, without colours.’
- II.—‘ In the North Isle joyning to the chancel. On a Brass Plate fix’d to a Stone in the ground, Will. Chapman, Ald’m. died 16 June 1647. Robert Child, Ald’m. Mayor in the yeare 1663, wn the K. & Q. were at Bath ; died 24 July, 1664. A fair monument in the wall, with the p’portion of a man to the middle in his Ald’m’s robes, painted to the life Gulielm. Chapman quonda’ praefectus hujus civitatis : ob. 16 June 1647. He was five times Mayor. Arms. parted per chevron arg. and gules a cressant counterchanged of ye field, a canton of ye 2^d.’
- III.—‘ In the south isle joining to the chancell. On a brass plate fastned to the said wall, Gul. Heath hujus civitatis quonda’ Ald’mannus qi ob. 2 Apr. 1607, aet. 55, after

w^{ch} follows a latine epitaph in vers. The ar'es cut in freestone over this monument are Ermine a chev' g. or rather a chevron between 9 cloves or spots of ermine wthout colour, impaling this coat drawne in the margin, supported by two Griffins.'

- IV.—'On a brass plate in ye ground, Rich. Randall, Gent., ob. 22 Sept. 1640, etc.'
- V.—'On another brass plate, Mathew Randall, Gent., sometimes Mayor of this city, ob. 21 Feb. 1640. Also Rob. Randall, Gent., son of the said Mathew, ob. 11 Dec. 1671, aet. 74.'
- VI.—'On a brass plate, Joh. Bigg, Gent., sometimes Mayor of this city, etc., ob. 10 Aug. 1674, aet. 74.
 Mrs Rebecca Andrews, Gentlewoman, ob. ult. Nov. 1672, aet. 73.'
- VII.—'In the South Cross Isle. On a brass plate on the said (south) wall. Maria Sherwood ux. Jo. Sherw. sepulta 12 Aug. 1612. Hen. Sherwood, sepult. 3 Jun. 1620. Joh. Sherwood, Dr Med., sepult. 16 Feb. 1620. A latin epitaph followes. See Guydot's book. Ar'es on the said mon. of Sherwood are—Erm. 3 roundells, creast a Talbot seiانت with collar & string therunto, without colours.'
- VIII.—(Reference is made to this, No. III in the list of extant brasses.)
- IX.—'In the North Isle joyning to the Body. Against the wall on a brass plate, Robt. Culliford, of Encombe de Insula Purbeck, in com. Dors., ob. 6 Oct. 1616, aet. 30. An English epitaph followes, w^{ch} I omit. The ar'es are—Arg. fess betw. 3 asses passant sab.'
- X.—'Neare to Pelling's monument, on a brass plate in ye wall. Edw. Alchornus, S.T.P., ob. 11 Jan. 1652. Ar'es on it are—A buck's head cabossed, & a cheif indented, quartering two coates.'
- XI.—'On a brass plate fastened to a free stone lying on ye ground, on ye left side of B'p Mountague's mon., Petr. Wentworth, S.T.P., Patricioru' proles doctrinae maritus, etc. sum'ms Hyb'niae Decanus anglie precoru' primus, etc., ob. 22 Jul. 1661.'
- XII.—'Neare to ye lesser west dore, on a brass plate fastned to a flat marble. Anne Baber, widow of Francis Bab' of

Chew Magna in com. Som'set, Esq., who was dau. of Will. Whitmore of London, Ald'ma', ob. ult. Dec. 1651. Impal. —Ar'es of Bab.', as before Fretty (arms of Whitmore Vert, fretty or).'

XIII.—' On a brass plate on ye ground, Lucy dau. of Tho. Greffeth of this citie, ob. 10 Apr. 1656. Note yt 3 brothers of this na'e are the com'on musitians of this citie (1678).'

XIV.—' On another, Anthonie Taunton of the co'mon councell of this citie, ob. 7 Aug. 1648. Rob. Baylie son of Edw. Baylie of Bradford, clothier, ob. 3 Oct. 1674.'

' ST. JAMES'S CHURCH WITHIN SOUTH GATE '

I.—' On the east wall of ye chancell is a brass plate fastned and theron an epitaph for Marie wife of Tho. Leyson, physitian, in lat. verse, put by the said Thomas, 15 Apr. 1599.'

II.—' On a brass plate laying on the ground in the middle of the chancell, an inscription for Tho. Hockley, of this city, gent., who died 2 Jan. 1665, aet. 45. Vary, a cheif (without colour).'

HOLLOWAY

' In ye middle part of Hollow-way on the right hand stands a little old decrepit hospitall built originally for lunaticks. . . . On the west side of this hospitall is a pretty chappell now standing, and over the porch-close leading therunto hath been a brass inscription to shew who had been the founder of yt Chappell, but it hath been long since toren off. The Hospitall and Chappell is called S. Marie Magdalens hospitall and Chappell.'

LANGRIDGE

I.—*Inscription (cross with effigy in the head lost) ; Robert Walsshe, esq. 1427. On the floor on the south side of the choir ; now partly covered by stalls.*

The slab lies apparently in its original position on the floor on the south side of the choir. It is much broken and flaked. It seems to have been about 72 in. long by about 30 in. wide. Part of it is covered for its entire length by choir-stalls, leaving

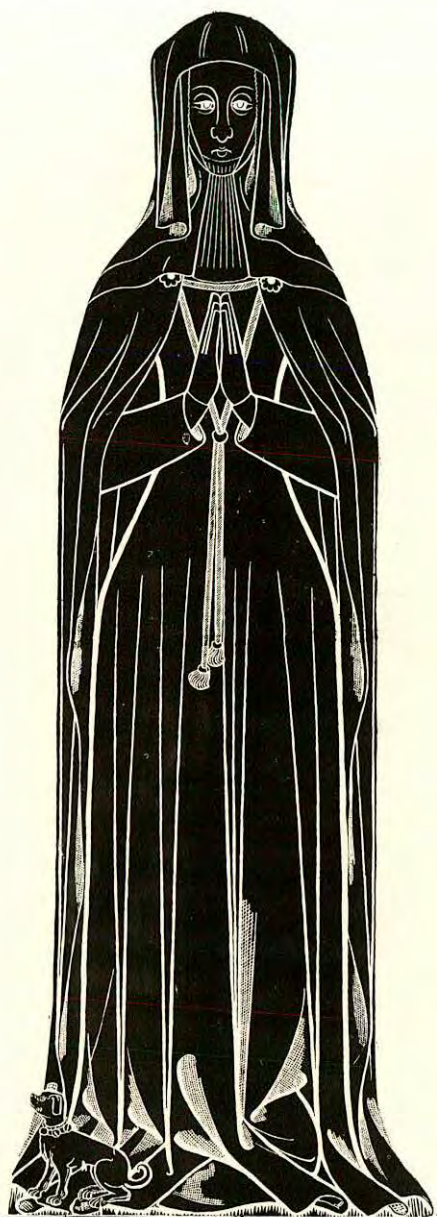
a width of 18 in. exposed to view. The indents, which are almost obliterated, show a small figure in the head of a foliated cross on a long stem, and two shields (dexter covered) at the top. The figure was evidently extant when Collinson wrote, (I. 132) as he says, 'At the top is the portraiture of the said Robert Walshe, with this scroll 'Miferere mei Deus'. He gives the foot-inscription in full. The portion exposed measures $4\frac{1}{2}$ in. by 15 in.

[*Hic iacet Ro*]b'tus Walshe Armig' qui obiit Sexto
[die mensis] Maij Anno dñi Milli'mo CCCC^o
[xxvij, cuius] anime propicetur deus Amen

The will of Robert Walshe is given in *S.R.S.*, 16. 120-1.

1427 [8 Luffenham, fol. 64]

6th May, A.D. 1427. I, Robert Walshe, esquire, make my will in this manner:—I bequeath my body to be buried in the chancel of the parish church of Langryge, opposite to the high altar. I bequeath to the fabric of the Cathedral Church of Llandaff 6s. 8d. Item, to the fabric of the Cathedral Church of Bath and Wells, 6s. 8d. Item, I bequeath 100s. to 100 priests to celebrate for my soul where they dwell as soon as it may conveniently be done. Item, I bequeath 100s. to be distributed amongst the poor. Item, 100s. to be distributed amongst priests immediately after my death. Item, 100s. to ten chaplains of honest conversation, to wit, to each 10s. to pray for my soul. Item, I will that sixty poor men and women shall be clothed with woollen cloth, each with two and a half yards of the worth of 2s. and 6d. Item, I bequeath 10 li to two chaplains to celebrate for my soul in the Church of Langough continually for one year. Item, I will that a distribution shall be made of 20 li. amongst the poor for my soul, as shall seem most expedient to my executors. Item, I bequeath to the Rector of Landough 20s. for my tithe forgotten. Item, to the Rector of Langrue for the same. To the rector of Langan, 6s. 8d. To the rector of Seintanthan [St. Athan, Glamorgan], 6s. 8d. Item, I bequeath to the bridge call Populbrugge, 6s. 8d. The residue of my goods not bequeathed I leave at the disposition of my executors that they, having God before their eyes, may dispose thereof for the souls of my parents, and of all the faithful deceased;



Hic iacet Elizabeth Walsche que obiit xx die mens Aprilis
 Anno dñi m^o cccc^o xli. quidam heri Robert Walsche arripit
 qui iacet in cancello istius ecclesie quorum animabus propicietur deus amen

LANGRIDGE

Elizabeth Walsche, 1441

and I ordain these, Elizabeth my wife, Thomas Crickelade, esquire, Master John Penthlyne, Sir Thomas Standich, rector of Langeryge, and I will that each of my three last named executors shall receive 40s. for his labour. Proved 18 May in the year above said before Master John Lyndefeld, commissary, and administration committed to Master John Penthlyne and Sir Thomas Standich executors, with power reserved, &c.

He appears to have been a son of Roger Walsshe of Hutton, Somerset, whose will was dated 1404.

II.—*Effigy, with foot inscription ; Elizabeth Walsche, widow of No. I, 1441. Formerly on the floor of the Choir ; now on the south wall of the nave.*

Collinson (I. 133) mentions this brass as 'on the floor at the entrance to the Chancel.' A drawing of the interior of the Church in the Braikenridge Collinson shows it in the centre in front of the chancel arch. The stone has disappeared, and the brass is now fixed to the south wall of the nave, where it is becoming sadly corroded by the lime-wash of the wall and the proximity of a large stove.

The effigy, a dignified figure in widow's costume, is interesting for comparison with that of Dame Isabel Chedder, about 1476, at Cheddar, which shows clearly the deterioration which set in in the second half of the fifteenth century.

Elizabeth Walsche wears the Kirtle, which appears only in the tight sleeves which pass through the slightly fuller sleeves of an overgown. This overgown is in one piece, fitting the figure, but becoming full as it reaches the ground in ample folds. A mantle, open down the entire front, is clasped across the breast by a cord which passes horizontally through a rosette on either side, and, knotted in the centre, forms a V shape at the waist, and ends in two tassels. A close cap with undulating edges frames the face, partly covering the chin, from which the plaited barbe appears to form the centre of a cape, over which fall the graceful folds of a head-covering. A lap-dog with a collar of bells sits on the dexter side of the skirt. The effigy measures 37½ in. by 13 in.

This effigy is evidently of a stock pattern. Five others are

known to the writer. They are precisely similar but for the minor differences noted below :

1434. Dame Eleanor, widow of Sir Henry Conquest (head lost, lap-dog on sinister side), Flitton, Beds. 1436, Matilda, widow of Thomas Chaucer, in which the lining of the mantle is hatched to hold white metal to represent fur. At her feet is a lion couchant, queue fourchée, the crest of her family. Burghersh ; Ewelme, Oxon. 1450, Agnes, widow of William Hiehecok, woolman, exactly the same as Elizabeth Walsche, but there is no dog ; Ampthill, Beds. 1451, Alice, widow of Thomas Reynes, esq., at Marston Mortaine, Beds., exact, but that the dog's head does not project beyond the skirt. 1465, Matilda, widow of Thomas Cobham Hoo, Kent, identical with the last.

The foot-inscription of three lines in black letter measures $4\frac{3}{8}$ in. by $21\frac{3}{4}$ in. :—

*Hic iacet Elizabeth Walsche que obiit xx^o die Mens' Aplis
Anno dni M^oCCCC^o xlv^o qñdam vxor Roberti Walsche Armigi'
qui iacet in cancello isti' Eccle^{ię}, quor' atabz p̄iciet' deus Amen.* ◇

III.—*Inscription ; Elizabeth Turner, sister of Roger Turner, rector, 1717, aged 47. On the floor on the north side of the chancel.*

The inscription is fixed to its original slab, which appears to have been considerably cut down.

It is engraved on an elliptical plate in eleven lines of script within a border of flowing design, with a grotesque head at top and bottom centres. It measures $16\frac{1}{2}$ in. by $12\frac{3}{4}$ in.

Here Lyeth
the Body of M^{rs}
Elizabeth Turner
the Pious and Virtuous
Sister id M^r Roger
Turner Rector of this
Church who Departed
this life the 31.st day of
July AD: 1717.
Ætatis Suę
47.

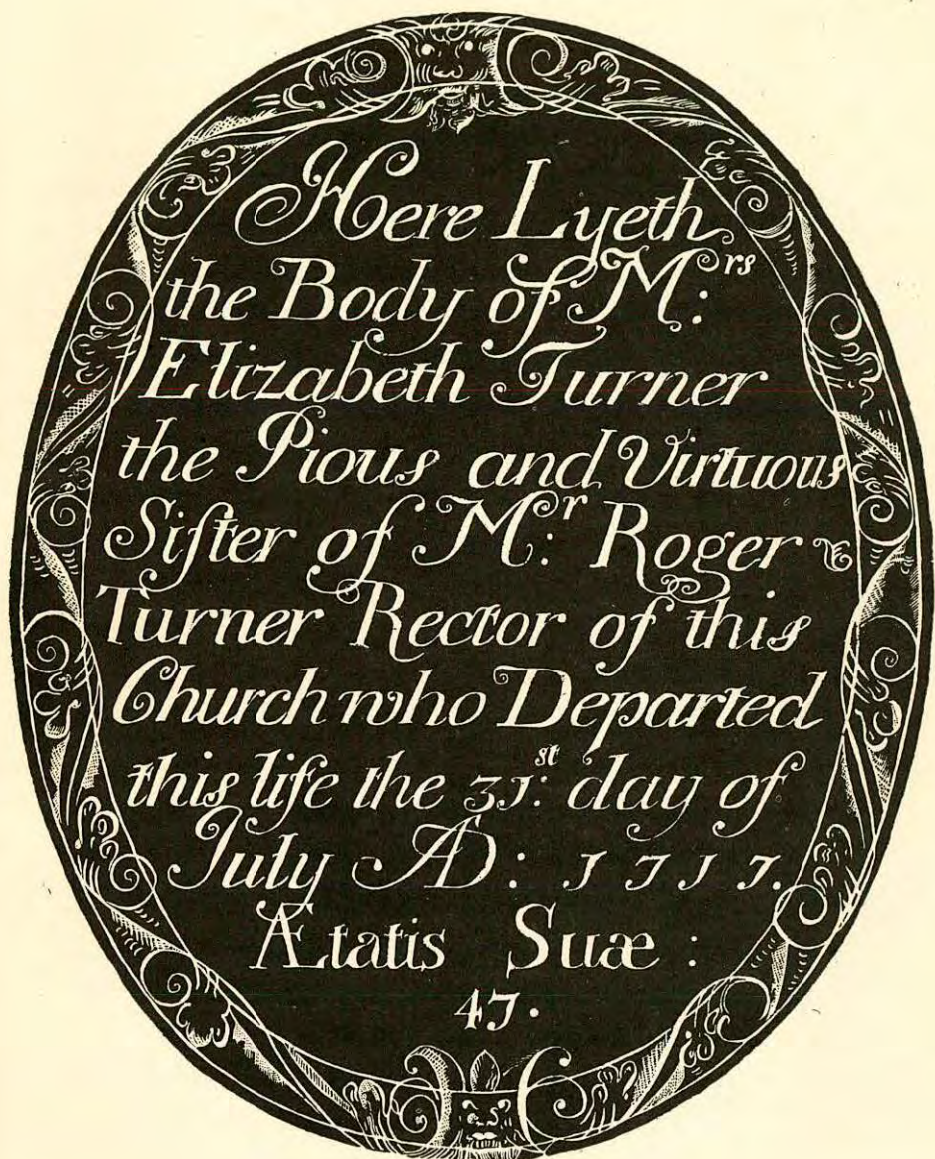


Fig. 5. Mrs. Elizabeth Turner, 1717.

Collinson (I. 133) mentions this plate, but gives the date wrongly as 1711. He also notes the following as 'within the communion rails,' incised on stone. This appears to be no longer extant:

Here lyeth the body of M^r. Roger Turner, rector of this parish, who departed this life November the 9th, 1727, aged 61 years.

Roger Turner was instituted 25 June, 1715 per cess. Thomas Turner, A.B., William Blathwhayt, esq., patron. He was succeeded at his death by John Shellard, 25 March, 1728.—*Weaver's Somerset Encumbents.*

NEWTON ST. LOE

Inscription ; William Hicks, gent. 1732, aged 60 ; Hannah his wife, 1743, aged 71. On the floor of the south aisle.

Under the indent of a lost plate measuring $6\frac{1}{2}$ in. by 9 in., with 2 in. interval, is this inscription in thirteen lines of Roman lettering, but for the words 'Also', which are in the elaborate black letter, characteristic of the initials of legal documents of the period ; It measures 14 in. by $12\frac{1}{4}$ in.

Also

Here lieth the Body
of (his Grandson)
WILLIAM HICKS
of this Parish GENT.
who died Oct: the 14
1732, Aged 60 Years.

Also Here lieth
the Body of
HANNAH HICKS
his Wife who died
November y^e 13TH 1743,
Aged 71 Years.

LOST BRASS

Collinson (III. 344) says : 'In the floor of the [S.] chapel is the portraiture of a female cut in brass, with her hands



Fig. 6. Edmund Forde, 1439.

uplifted, and the following fragments of an inscription round the edge of the stone, "Hic jacet Elizabeth Neel . . . Keythorpe et Prestolde in. . . Pax vivis et requies defunctis, Amen."'

Keythorpe and Prestwold are in Leicestershire. At Prestwold there is a fifteenth-century monument to Richard Nee and wife.

SWAINSWICK

Effigy in civil dress, with anelace, Edmund Forde, 1439, foot inscription and three scrolls with text from Job XIX, 25, 26; two shields lost. On the floor of the choir.

The brass lies in its original slab, 72 in. by 24 in., on the floor in the middle of the choir.

It consists of the effigy of a civilian, 25½ in. by 6½ in.; three scrolls, 1 in. by 11½ in.; indents of two shields, about 5 in. by 4 in.; and a foot-inscription, 3½ in. by 20¼ in.

The slightly worn state of the brass bears out Collinson's surmise that it may have been once on a raised tomb.

Edmund Forde is represented full-face, with short hair with a curved dip in the middle of the forehead. He has no more than the ends of a small moustache, the rest of the face clean-shaven but for a minute forked beard. He wears a loose tunic reaching to just above the ankles, with a collar high on the neck and edged with fur, shewing an undergarment at the opening under the chin. The sleeves of the tunic are very loose and bag-like, but tight and fur-edged at the wrists, the tighter sleeves of the undergarment showing beneath. Pointed half-boots are worn with no visible means of fastening or lacing. The feet rest on a grassy mound including an exquisite design of trefoils. Round the waist a loose girdle is ornamented with roundels. From it on the left side hangs by a cord the anelace, the pomel with a centre trefoil surrounded by small studs; the hilt doubly-curved, and ending in trefoils; the scabbard with two bands, each with two quatrefoils. It is an exceptionally beautiful piece of work, in fact the whole brass is one of the most beautiful of its period of English work.

The three scrolls bear in black letter the verses from Job XIX, 25, 26 :—

Dexter : Credo qd' redemptor meus viuit :

Central : Et in nouissimo die de tr'a surrecturus sum

Sinister : Et in carne mea videbo deū saluatorē meū

The foot inscription consists of three lines in black letter :—

Orate p aīa Edmūdi Forde de Swayneswyke Armigr'
qui obiit xviij^o die Februarij, A^o dñi M^oCCCC^o XXXIX^o Et ÷
A^o regni Regis Henrici vij^{ti} post conquestū xviij^o cui aīe ppiciet' de'

The brass is illustrated, omitting the indents of the shields, in the *Monumental Brass Society's Portfolio*, II, pl. 3, and in *Annals of Swainswick*, 14, by *R. E. M. Peach*.