

BRONZE AGE METALWORK IN SOMERSET: A CATALOGUE OF STRAY FINDS

BY IAN COLQUHOUN

The aim of this catalogue has been to collect in the fullest possible detail all the Bronze Age metalwork from Somerset with the exception of those pieces in hoard associations (although a list of these will be found at the end of the catalogue). 'Somerset' relates to the pre-1974 boundary.

CHRONOLOGY

The traditional view of a three-period Bronze Age, with all the complications which that involved, has given way in the past decade to a more chronological outlook, which sees bronze metalwork as belonging to a series of industrial phases (Burgess, 1974).

THE EARLY BRONZE AGE (2000 to 1400 BC approximately)

The early production of copper axes, concentrated in Ireland, must have ceased soon after bronze was introduced. Flat bronze axes, both those with broad butts (Group A) and those with narrow butts (Group B), have been discussed by both Britton (1963) and Burgess (1974, 192-3). Technical innovations such as Camerton-Snowhill daggers, tanged spearheads, socketed and pegged spearheads and cast-flanged axes were introduced in the 16th century BC; this metalworking tradition is named after the hoard from Arreton Down (Britton, 1963, pl. 27).

THE ACTON PARK PHASE (1400 to 1250 BC approximately)

By the opening phase of the Middle Bronze Age, palstaves were superseding flanged axes as the most common axe type in Southern England. They appear to have originated in North Wales, from where the eponymous hoard comes (Grimes, 1951, fig. 61).

THE TAUNTON PHASE (1250 to 1050 BC approximately)

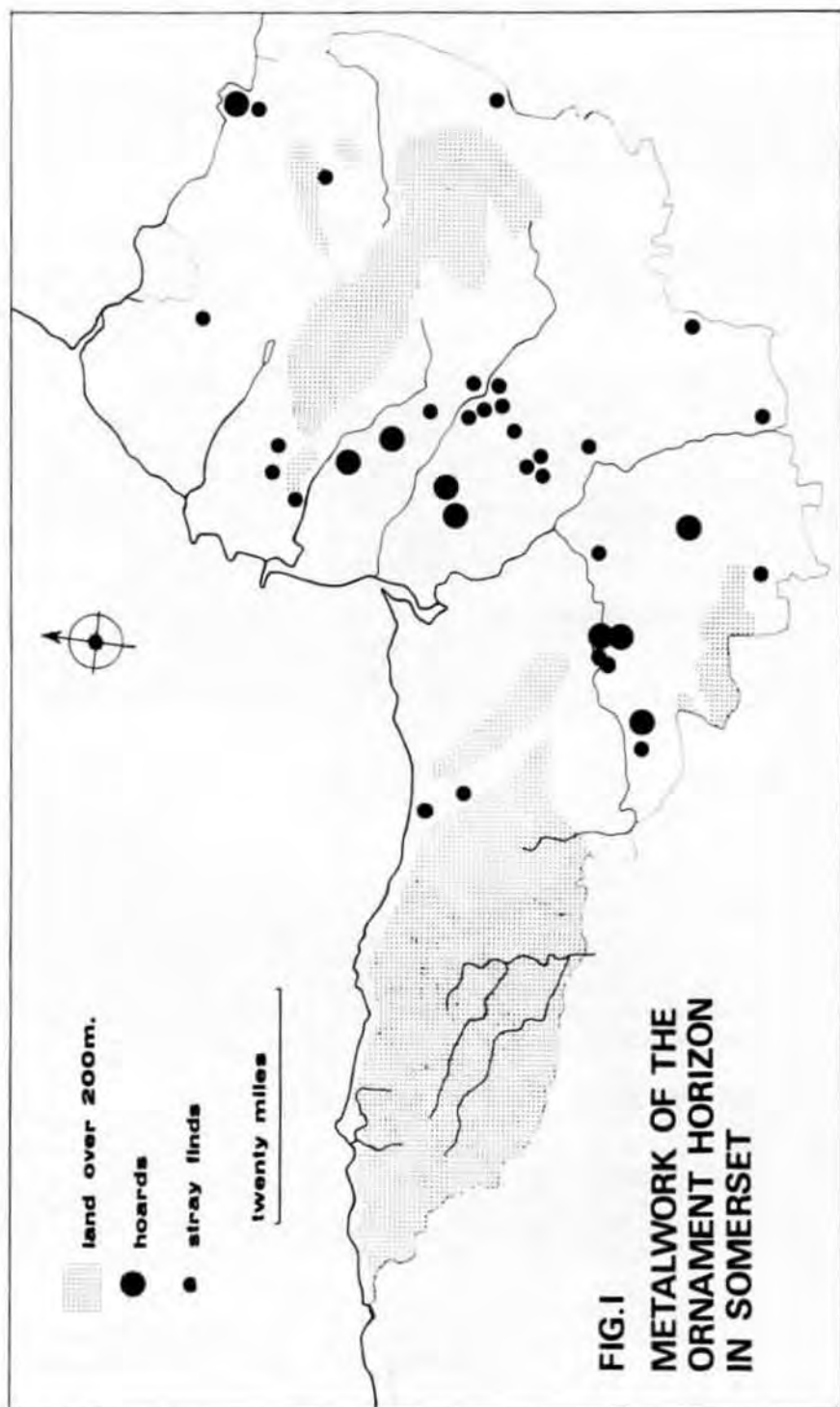
This period saw the transition of Somerset from an industrial backwater to a producer of a new and confident style of metalwork, known as the 'Ornament Horizon' (Smith, 1959). Although the impetus for these new developments must have come from Northern Europe, the Montelius II background of much of the Somerset material shows that ideas must have travelled both ways. For instance, the fact that there are now more socketed axes of the Taunton/Hademarschen type known from England than from Germany raises the interesting possibility that this, the earliest type of socketed axe, was in fact an indigenous innovation. The large amount of 'Ornament Horizon' material shows that Somerset must have experienced a lingering Taunton Phase, while new developments occurred in other areas.

THE PENARD PHASE (1100 to 850 BC approximately)

The Penard phase saw the development of a novel Thames Valley/Irish link through South Wales, from where the new fashions must have filtered through to Somerset. Palstaves continued to be produced in quantity, although socketed axes like those from Gwithian, Cornwall (Burgess, 1976), previously classed as South Welsh axes, can now be seen to belong to this period. Tanged-hilt swords were a Penard innovation; their use in place of the rapier indicates a change in fighting techniques.

THE WILBURTON PHASE (1000 to 850 BC approximately)

This phase saw, for the first time, the widespread use of the socketed axe and the demise of the palstave. Smiths were becoming more confident with weapons, and the Wilburton (Group IV) sword appeared.



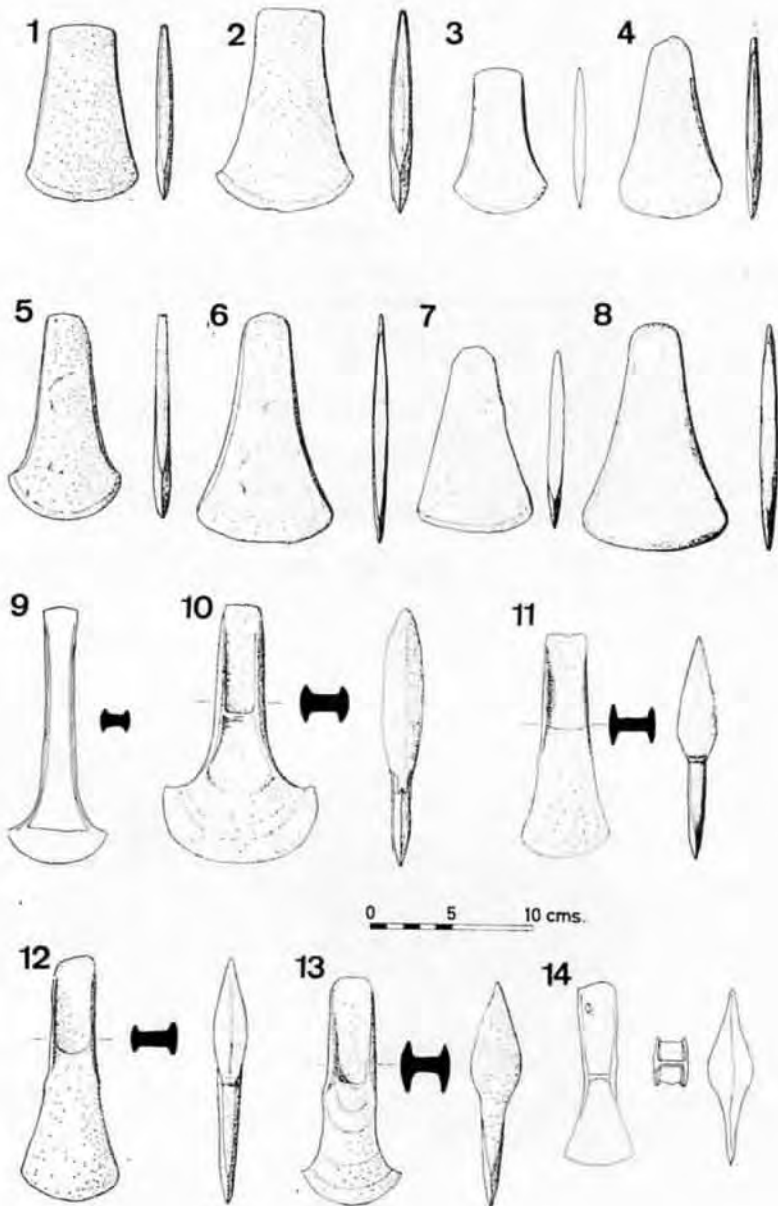
THE EWART PARK PHASE (850 to 550 BC approximately)

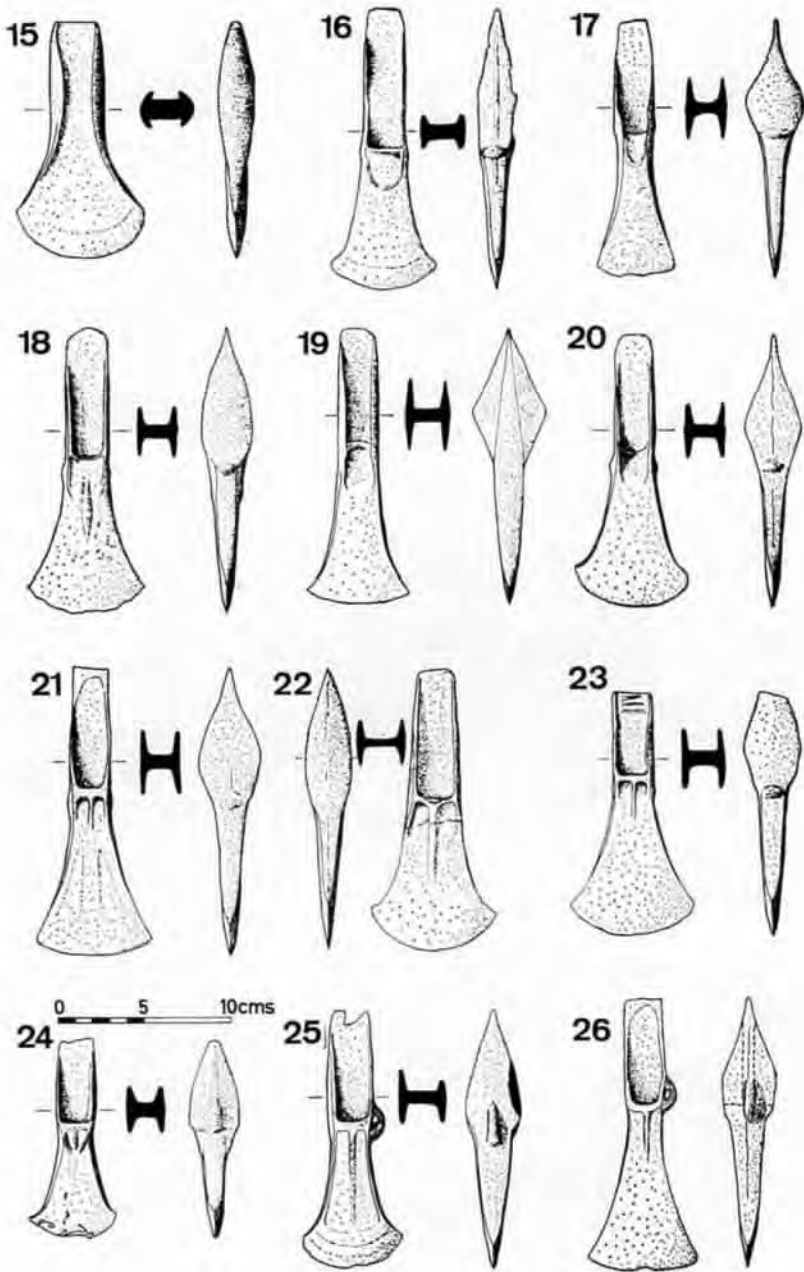
There is a wealth of material from this phase in the county. The recognition of the Gwithian axe as belonging to an earlier period limits the amount of material belonging to the 'Llantwit-Stogursey' tradition, and it appears that the Stogursey hoard (McNeil, 1973) may be an intrusive hoard of a South Welsh 'Llantwit' industry. The Late Bronze Age beginnings of hillfort sites (Burgess, 1974, 219), evidenced by C14 dating, is strengthened by the bronzes from Ham Hill and the excavations at Cadbury (see Appendix B and Alcock, 1972). Hallstatt C influence in the mid-6th century appears to have been only a veneer on existing traditions, which must have continued up until iron superseded bronze.

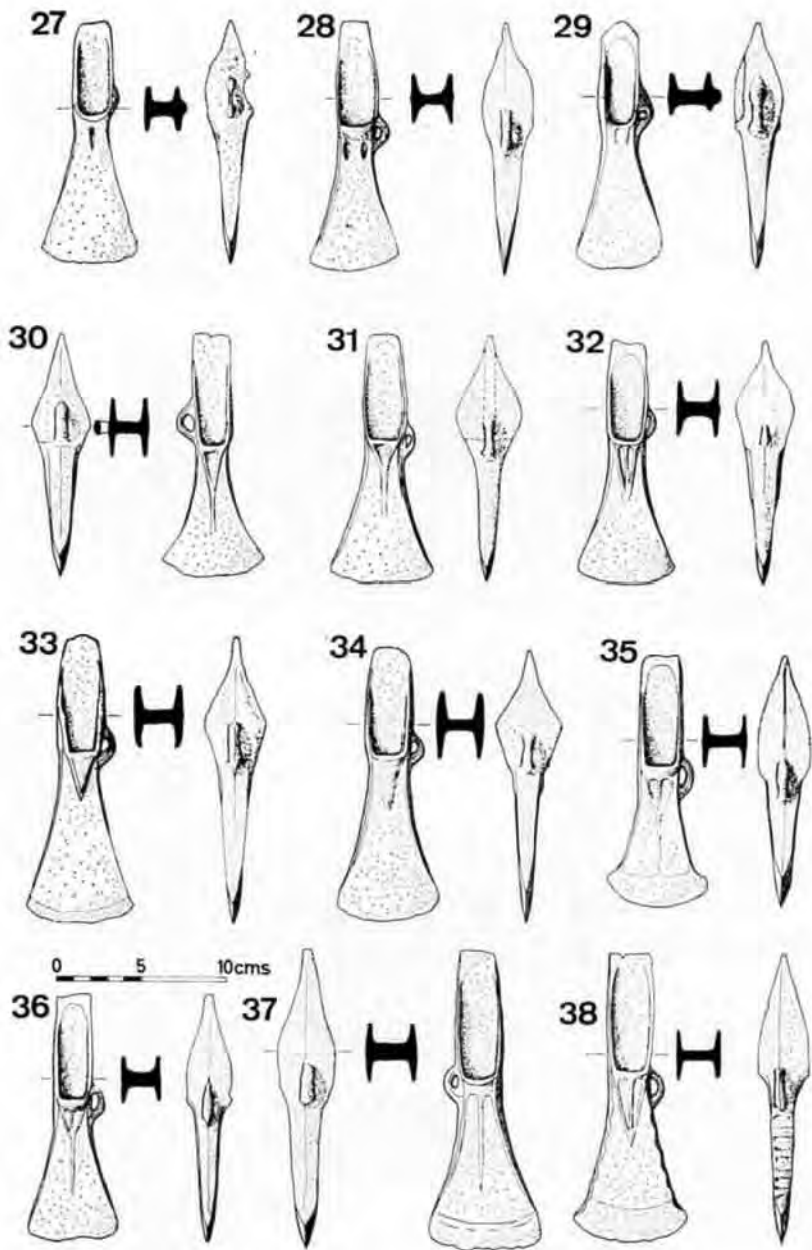
THE CATALOGUE

Bronzes in the catalogue which are marked with an asterisk are not illustrated, and those listed in Appendix B have come to the writer's notice since the compilation of the catalogue. The abbreviations are explained at the end.

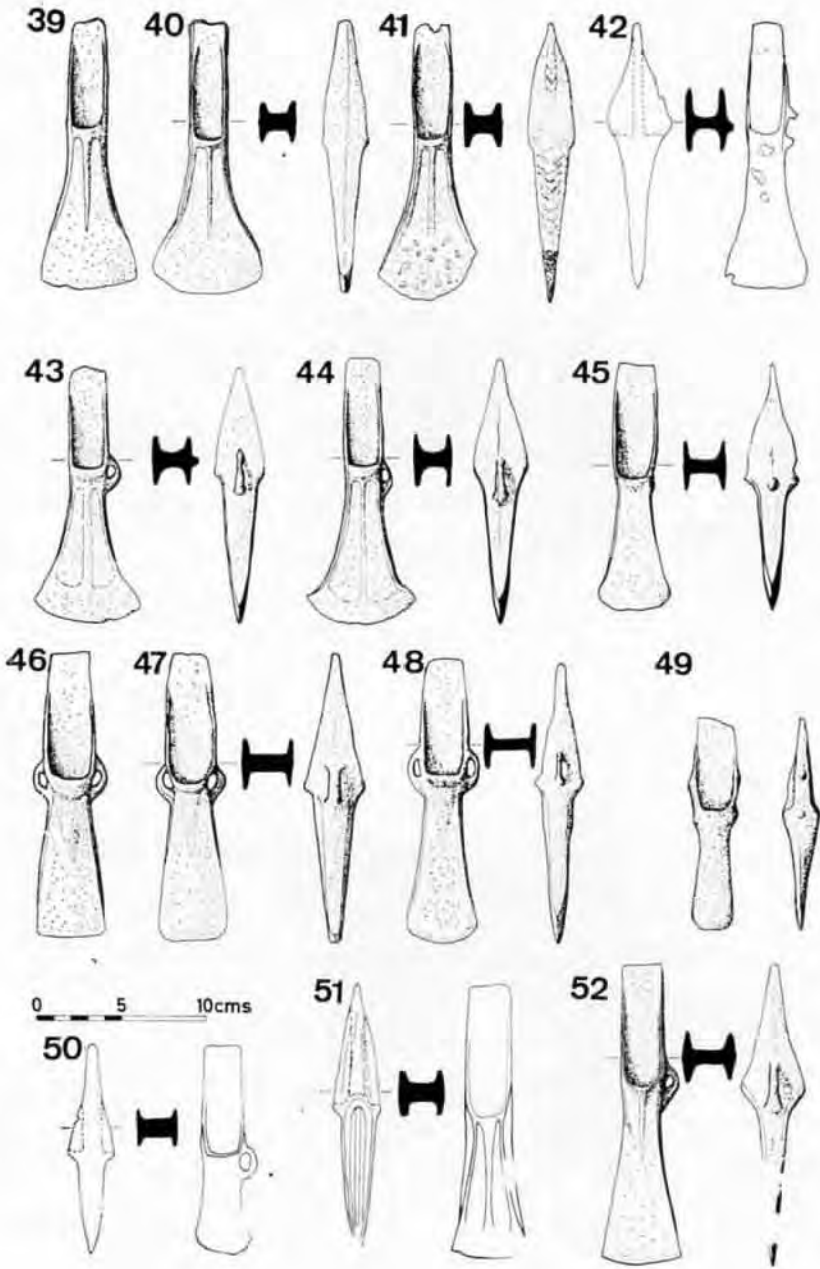
1. Flat Axe, CHEDDAR. Wells Mus. 1448. EBA broad butt; Burgess Group A (Burgess, 1974, 192-3).
2. Flat Axe, OLD CLEEVE, Taunton Mus. 80d. EBA broad butt/thin butted; Burgess Group AB (see above).
3. Flat Axe, UPHILL, Weston-s-Mare Mus. 63/246. Details as above.
4. Flat Axe, STAPLE FITZPAINE. Taunton Mus. 1b. *P.S.A.N.H.S.*, 50 (ii) iii. Man (1904), 13; (1927), 137. EBA narrow butt; Burgess Group B (Burgess, 1974, 192-3).
5. Flat Axe, SOMERSET. Ashmolean Mus. 1927-2365. Details as above.
6. Flat Axe, WELLINGTON. Taunton Mus. 81a. *P.S.A.N.H.S.*, 74, lix. Details as above. Possibly from the same mould as no. 8.
7. Flat Axe, EBBOR. Bristol Mus. F2817. Balch (1914), 162 and pl. xxviii. Details as above.
8. Flat Axe, DITCHEAT HILL. Wells Mus. 482. Details as above. Possibly from the same mould as no. 6.
9. Flanged Axe, TAUNTON. Drawing from Brit. Mus. Card Index, where it is listed as belonging to the Herts. County Mus. The present Director has informed the writer that it was sold by the then trustees in the 1950s along with much other metalwork. This appears to be an axe belonging to the Arreton tradn., though it is remarkably slender, cf. Arreton Down Hoard (Britton, 1963, pl. 27), and the Milverton Hoard (Minnitt, 1974).
10. Flanged Axe, PILTON, Wells Mus. 2581. EBA Arreton tradn., see above.
11. Haft-flanged Axe, STOKE LANE. Taunton Mus. 4a. Acton Park Phase.
12. Haft-flanged Axe, SOMERSET. Ashmolean Mus. 1927-2593. Acton Park Phase.
13. Haft-flanged Axe, BATH BRIDGE, R. AVON. Brit. Mus. 66-6 27-20. Acton Park Phase. Note the blade patterning, similar to no. 10.
14. Haft-flanged Axe, SOMERSET. Drawing from Brit. Mus. Card Index. Derby Mus. 51951. Acton Park Phase.
15. Flanged Axe, GLASTONBURY. Taunton Mus. 3a. Acton Park Phase.
16. Palstave, OLANDS MEADOW, WELLINGTON. Taunton Mus. 8a. Shield pattern, characteristic of the Acton Park Phase.
17. Palstave, SOLSBURY HILL. Bristol Mus. E.449. Grinsell (1968), no. 57a. Shield pattern, Butler Class 1A 1b (Butler 1963, 51). Burgess Group I (Burgess, 1974, 201). Acton Park Phase.
18. Palstave, BLAKEWAY, WEDMORE. Taunton Mus. 80c. Butler Class 1A 1c (Butler, 1963, 51). Burgess Group I (Burgess, 1974, 201). Acton Park Phase.
19. Palstave, LYNG, nr. ATHELNEY. Taunton Mus. 7b. Shield pattern. Butler Class 1A 1b, Burgess Group I (see above). Acton Park Phase.
20. Palstave, BATH. Bath Mus. Butler Class 1A 1c; details as above.

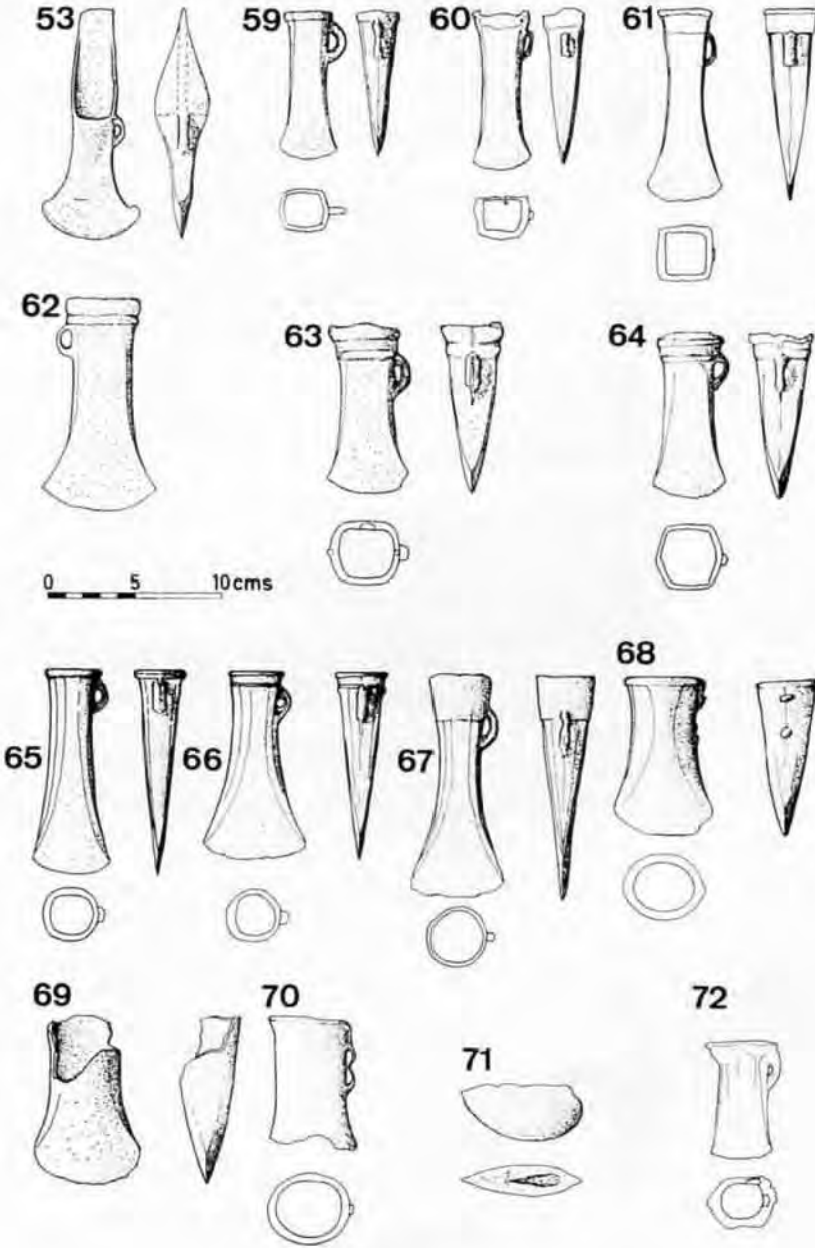




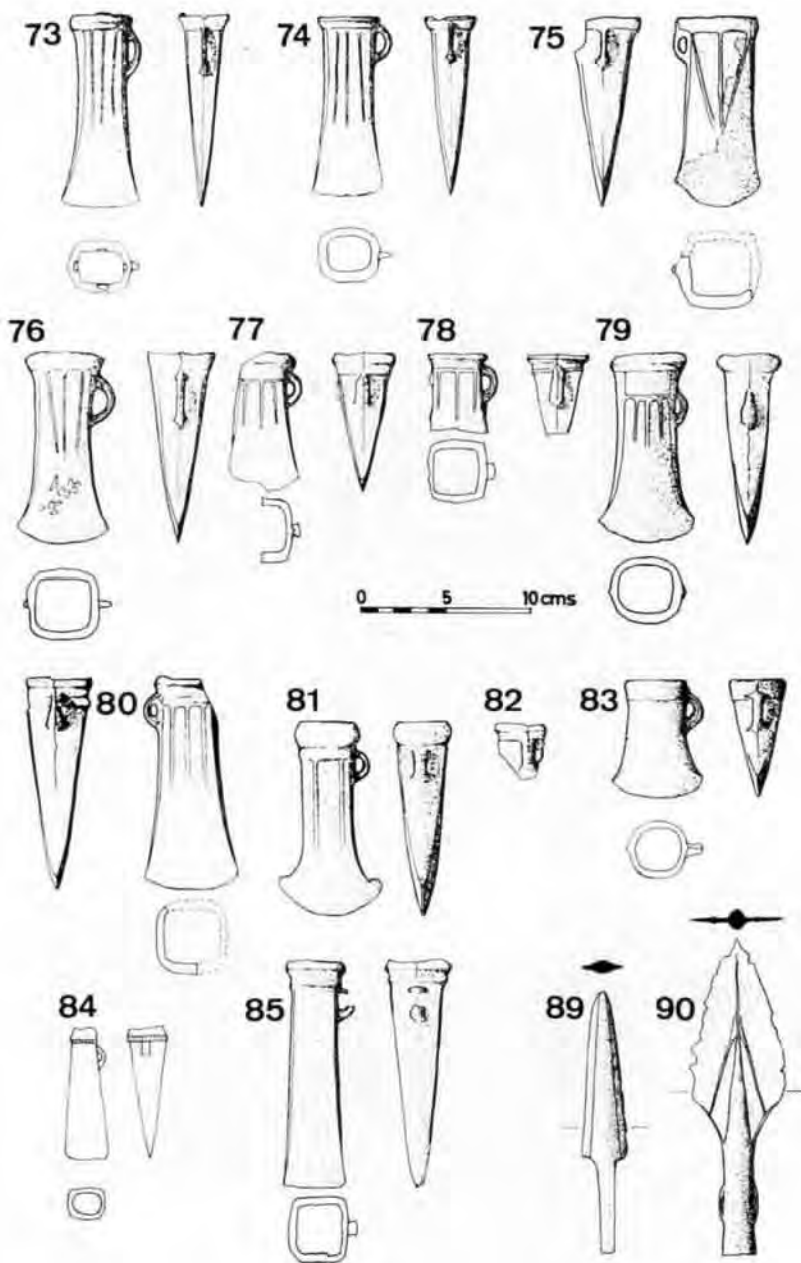


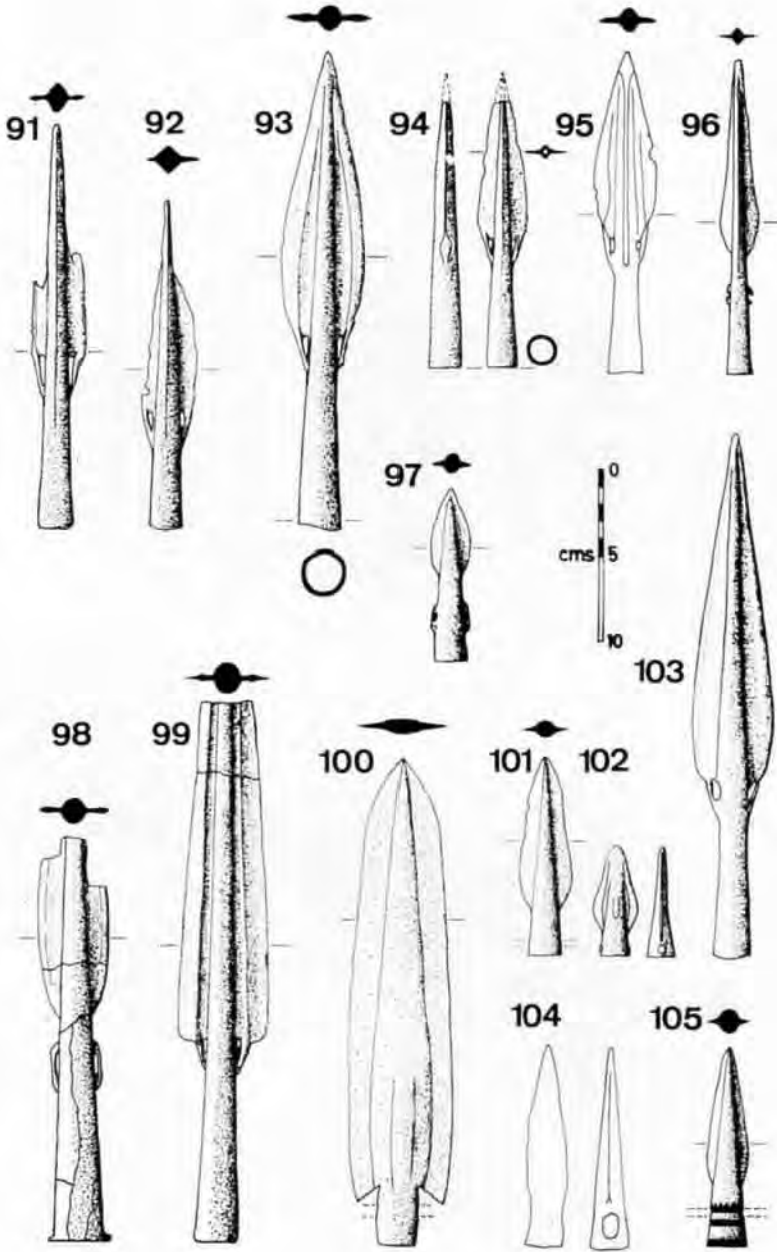
21. Palstave, HAYNE, OLD CLEEVE. Taunton Mus. 81c. Details as above. Acton Park Phase.
22. Palstave, ATHELNEY. Taunton Mus. 81b. Early Midribbed; Acton Park Phase, Burgess Group II (Burgess, 1974, 201).
23. Palstave, WORLEBURY HILL, Weston-s-Mare Mus. 57/0213. Details as above.
24. Palstave, SOMERSET. Taunton Mus. 7a. Burgess Group II (see above).
25. Palstave, WELLS, Wells Mus. 1449. Butler Class 1A 1d (Butler, 1963, 51), an Acton Park sub-group, originating from East Anglia.
26. Palstave, KINGS SEDGEMOOR. Taunton Mus. 14b. *P.S.A.N.H.S.*, 69, lxiv. Taunton Phase, Burgess Group III S-W (high-flanged) (Burgess, 1974, fig. 31).
27. Palstave, GLASTONBURY. Glast. Mus. GM 184. Taunton Phase, details as above.
28. Palstave, BUCKLAND ST. MARY. Taunton Mus. 12b. *P.S.A.N.H.S.*, 56 (i), 84. Taunton Phase, details as above.
29. Palstave, BANWELL HILL. Bristol Mus. E1747. *P.S.A.N.H.S.*, 51 (ii), 40. Grinsell (1968), no. 58a. Taunton Phase, details as above.
30. Palstave, RADSTOCK. Taunton Mus. 75 AA 4. *P.S.A.N.H.S.*, 119, 67. Taunton Phase, details as above.
31. Palstave, GLASTONBURY, 'WEST OF TURBARIES'. Taunton Mus. 10b. Taunton Phase, details as above. The trident decoration puts this axe in Butler Class 1A 2 (Butler, 1963, 51).
32. Palstave, GLASTONBURY. Glast. Mus. GM 205. Taunton Phase, details as above. Butler Class 1A 2.
33. Palstave, NORTH CURRY. Taunton Mus. 8c. Taunton Phase, details as above. Butler Class 1A 2.
34. Palstave, STAPLEGROVE. Taunton Mus. 83a. *P.S.A.N.H.S.*, 78, lxxv. Taunton Phase, details as above. Possibly from the same mould as no. 35.
35. Palstave, HAM HILL. Taunton Mus. 9b. *P.S.A.N.H.S.*, 48 (ii), 30. Taunton Phase, details as above. Possibly from the same mould as no. 34.
36. Palstave, RODNEY STOKE WOOD. Taunton Mus. 12a. Penard Phase, Burgess Group IV (Burgess, 1974, 205). The decoration belongs to Butler Class 1A 2 (Butler, 1963, 55).
37. Palstave, MILBORNE PORT. Taunton Mus. *P.S.A.N.H.S.*, 71, lxxxii. Penard Phase, details as above.
38. Palstave, HAM HILL, Taunton Mus. 14a. *P.S.A.N.H.S.*, 51 (ii), 143. Penard Phase, Burgess Group IV (Burgess, 1974, 205).
39. Palstave, PEASEDOWN ST. JOHN. Taunton Mus. Burgess Group IV, as above. Butler Class 1A 2a (Butler, 1963, 55).
40. Palstave, COMPTON MARTIN. Drawing from Davies (1927), 28. Group III low-flanged (Burgess, 1974, fig. 31), Taunton Phase. There is a comparable axe in the Blackrock Hoard (Inv. Arch. GB.47).
41. Palstave, OLD CLEEVE. Taunton Mus. 81d. Details as above.
42. Palstave, Nr. BATH. Bath Mus. ACC9/63 A/B/B3. Details as above.
43. Palstave, WELLINGTON. Drawing from Brit. Mus. Card Index. In the 1930s this was in the possession of W. Halloway, Esq., 5, Highcroft Villas, Brighton. Group II South-Western (Burgess, 1974, fig. 31), Taunton Phase.
44. Palstave, WEARE. Taunton Mus. 84b. Group IV (Burgess, 1974, fig. 31), Penard Phase.
45. Palstave, SOMERSET. Ashmolean Mus. 1927-2595. Evans (1881), 89 and fig. 77. Details as above.
46. Palstave, GLASTONBURY, 'WEST OF TURBARIES'. Taunton Mus. 10a. Details as above.
47. Palstave, CURLAND. Taunton Mus. Double-looped, a heavy type of tool belonging to the Penard Phase. Only seven are known from outside the county:



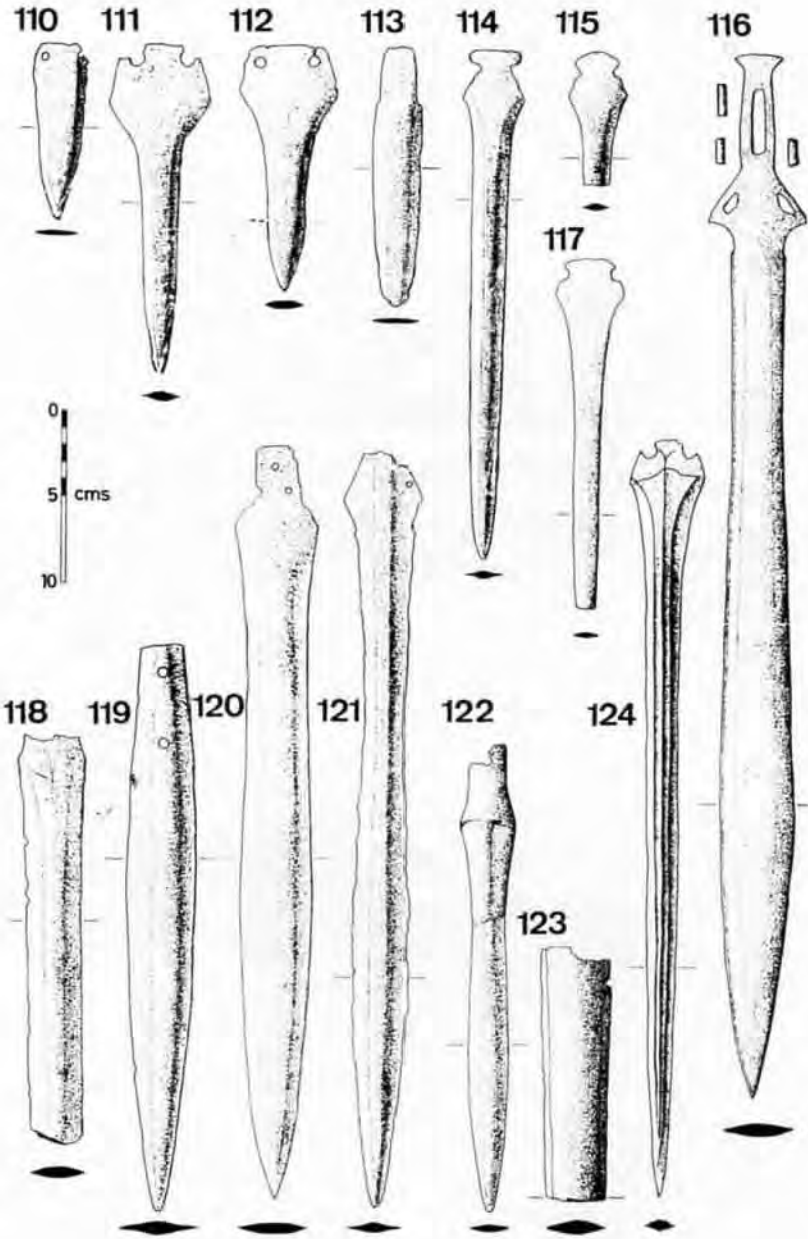


- two from Cornwall, one from Weymouth, Bournemouth, Gloucs., Wales and Ireland respectively (Savory, 1968).
48. Palstave, SOUTH PETHERTON. Taunton Mus. 131. Evans (1881), 96. *P.S.A.N.H.S.*, 51 (ii), 141. Double-looped, details as above.
 49. Palstave, CHEDDAR. Brit. Mus. Copies in Cheddar Caves Mus. and Bristol Mus. F.2843. *Ant. J.*, 9, 387: 10, 247. *P.S.Ant.*, 25 (xxi), 138. Double-looped, details as above.
 50. Palstave, SOMERSET. Brit. Mus. 80-6. 8-2. Possibly a broken double-looped example. Penard Phase.
 51. Palstave, RADSTOCK. Drawing from Brit. Mus. Card Index. Burgess Group IV (Burgess, 1974, fig. 31).
 52. Palstave, WELLINGTON. Drawing from Brit. Mus. Card Index. In the 1930s this was in the possession of A. B. Cook, M.A., who was then Curator of the Fitzwilliam Museum of Classical Archaeology, Cambridge. The drawing is confusing, though the palstave may belong to Burgess Group V (Burgess, 1974, fig. 31). Wilburton Phase.
 53. Palstave, STRETCHOLT. Bridgwater Mus. B80. Burgess Group V, details as above.
 54. Palstave, GLASTONBURY. Glast. Mus. GM 188. Irish series, Group D (Burgess, 1974, fig. 32). (Drawing on final page of figures.)
 - *55. Palstave, OLANDS MEADOW, WELLINGTON. Taunton Mus. 8a. Dobson (1931), 85. *P.S.A.N.H.S.*, 38 (i), 71; 63 (i), 108. Shield pattern, Acton Park Phase.
 - *56. Palstave, FLAX BOURTON. Dobson (1931), 94. *P.U.B.S.S.* (1931).
 - *57. Palstave, CLATWORTHY. Dobson (1931), 85.
 - *58. Palstave, COMBE ST. NICHOLAS. *P.S.A.N.H.S.*, 63 (ii), 116.
 59. Socketed Axe, LULSGATE. Bristol Mus. F2841. Grinsell (1968), 40. Taunton type axe, Taunton Phase.
 60. Socketed Axe, STOGUMBER. Bristol Mus. F3760. Grinsell (1968), no. 65c, ii. Details as above.
 61. Socketed Axe, AXBRIDGE. Taunton Mus. Details as above. This axe is unusually long for its type.
 62. Socketed Axe, CHEDDAR. Cheddar Mus. Butler 'South-Eastern' type (Butler 1963, 57), Wilburton Phase.
 63. Socketed Axe, Nr. BATH. Salisbury Mus. 43. Evans (1881), 114. Moore and Rowlands (1972), 56. Details as above.
 64. Socketed Axe, SALTFORD. Bristol Mus. 68c. Details as above.
 65. Socketed Axe, GLASTONBURY, 'WEST OF TURBARIES'. Taunton Mus. 19a. *P.S.A.N.H.S.*, 48 (i), 83. 'Slender faceted' type (Butler, 1963, 86). Facetting may be of Irish origin, as the earliest known example of this technique appears to be in the Dowris Hoard (Eogan, 1964, 344). Ewart Park Phase.
 66. Socketed Axe, WILLITON. Taunton Mus. 20b. Details as above.
 67. Socketed Axe, SOMERSET. Ashmolean Mus. 1927-2630. Details as above. The 'trumpet' mouth moulding may also be seen in Axe no. 34 in the Stogursey Hoard (McNeil, 1973).
 - 68-71. Socketed Axes, BATH. Bath Mus. These four unpublished axes appear to constitute a hoard, although the circumstances of the find are not certain. All belong to a type common in Ireland during the Dowris Phase (Eogan, 1964, 293), contemporary with the Southern English Ewart Park Phase, or possibly late Wilburton.
 72. Socketed Axe, SOMERSET. Hull Mus. 16. *H.M.Q.R.* no. 83. South Welsh axe, Ewart Park Phase (Grimes, 1951; Grinsell, 1968; Burgess, 1976).
 73. Socketed Axe, SEDGEMOOR. Taunton Mus. 20a. Evans (1881), 119. Gwithian type axe (Burgess, 1976, 69); most likely Penard Phase.
 74. Socketed Axe, MEARE. Taunton Mus. 82b. Arch. Exhibition Univ. Coll. London (1929) Catalogue. Details as above,

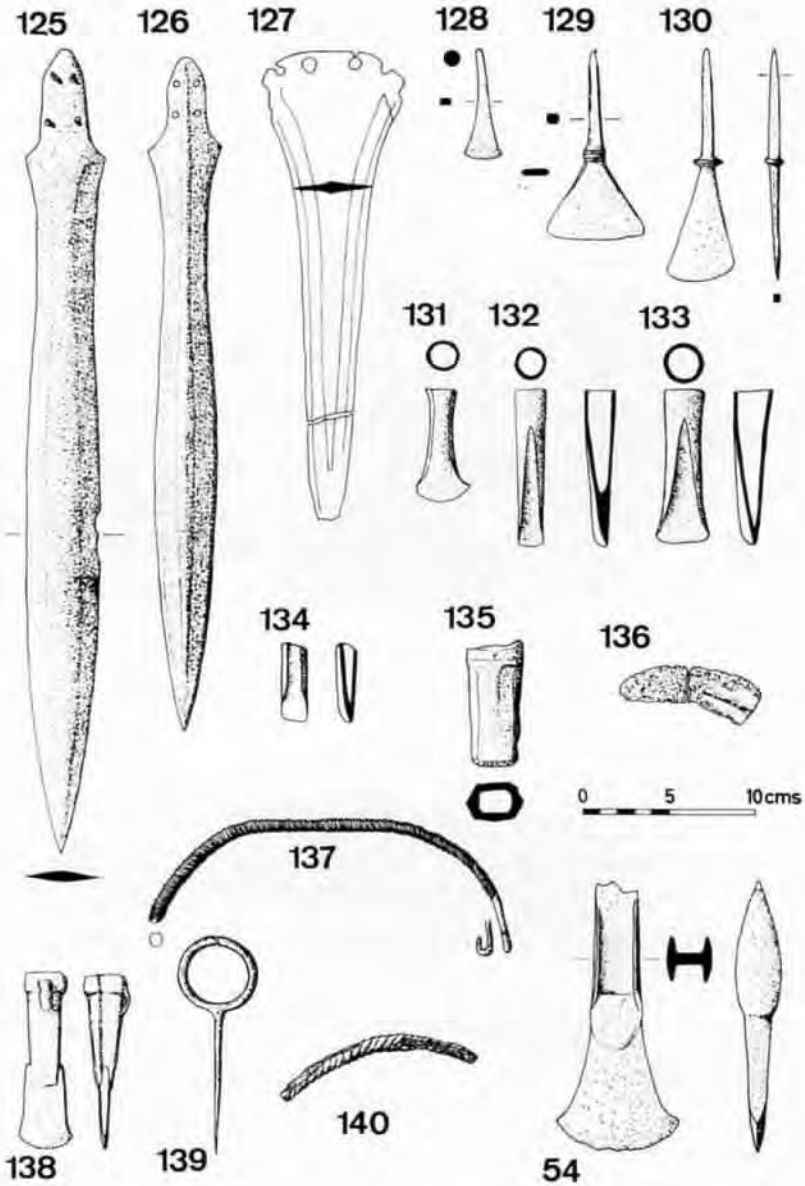




75. Socketed Axe, LOXTON HILL. Taunton Mus. 22c. *P.S.A.N.H.S.*, 62, lxi. South Welsh axe, Ewart Park Phase.
76. Socketed Axe, GLASTONBURY. Glast. Mus. 0.18.204. Dobson (1931), 93. Gwithian type axe, most likely Penard Phase.
77. Socketed Axe, OLD CLEEVE. Taunton Mus. 82a. Yorkshire type axe (Coles, 1959, 27; Burgess, 1968b, 19), Ewart Park Phase.
78. Socketed Axe, SOMERSET. Taunton Mus. 21c. Details as above.
79. Socketed Axe, SOMERSET. Ashmolean Mus. 1927-2631. Details as above. A large example of this type.
80. Socketed Axe. HAM HILL. Taunton Mus. 22b. *P.S.A.N.H.S.*, 48 (ii), 30. Sompting type, late Ewart Park Phase.
81. Socketed Axe, WORLE HALL. Ashmolean Mus. 1927-2656. Related to Yorkshire type, late Ewart Park Phase.
82. Socketed Axe fragment, HAM HILL. Taunton Mus. Yorkshire type, Ewart Park Phase.
83. Socketed Axe, WELLINGTON. Taunton Mus. E. 1761. *P.S.A.N.H.S.*, 98, 8. Irish bag-shaped axe (Eogan, 1964, 293). Wilburton/Ewart Park Phase.
84. Socketed Axe, CLAVERTON DOWN. Alnwick Cas. Mus. C227. Breton type axe (Dunning, 1959; Briard, 1965, 248), late Ewart Park Phase.
85. Socketed Axe, WELLS. Wells Mus. 1450. Details as above.
- *86. Socketed Axe, SOMERSET. Glasgow University, Bishop College Museum B33.
- *87. Socketed Axe, CADBURY. Newcastle, Black Gate Mus. 1931.50. *P.S.A.N.*, 153, pl. X.
- *88. Socketed Axe, TAUNTON. Dobson (1931), 254, where it is listed as belonging to the Herts. County Mus. The present Director has informed the writer that it was sold by the then trustees in the 1950s along with much other metalwork.
89. Spearhead, SHAPWICK HEATH. Taunton Mus. 45.A.25. Early Bronze Age Arreton Tradition (Arreton Down Hoard, Britton 1963, pl. 27).
90. Spearhead, GLASTONBURY, 'WEST OF TURBARIES'. Taunton Mus. 35b. Socket-looped, Acton Park Phase.
91. Spearhead, GLASTONBURY, 'WEST OF TURBARIES'. Taunton Mus. 33a. *P.S.A.N.H.S.*, 48 (i), 83. Basal-looped, Acton Park/Taunton Phase.
92. Spearhead, SHAPWICK HEATH. Taunton Mus. 52.A.134. Details as above.
93. Spearhead, HORRINGTON HILL. Wells Mus. 1454. *P.S.A.N.H.S.*, 117, 119. Details as above. Found in association with no. 98.
94. Spearhead, LOXTON. Weston-s-Mare Mus. 454. Details as above.
95. Spearhead, MIDFORD VIADUCT. Ulster Mus. Drawing from Brit. Mus. Card Index. Details as above.
96. Spearhead, GLASTONBURY, 'WEST OF TURBARIES'. Taunton Mus. 34a. *P.S.A.N.H.S.*, 48 (i), 83. Side-looped; Acton Park/Taunton Phase.
97. Spearhead, WELLS. Wells Mus. 1462. Details as above.
98. Spearhead, HORRINGTON HILL. Wells Mus. 2582. Details as above. Found in association with no. 93.
99. Spearhead, WADESFORD. Taunton Mus. 34b. Evans (1881), 328. *P.S.A.N.H.S.*, 13 (i), 70, 72; 63 (ii), 116. Straight-based basal-looped (Burgess, 1974, fig. 33); Penard Phase.
100. Spearhead, GODNEY. Glastonbury Mus. Burgess, Coombs and Davies (1972), 279. Barbed, Broadward Tradition; Ewart Park Phase.
101. Spearhead, HAM HILL. Taunton Mus. Plain, pegged, a type common from the Penard Phase onwards.
102. Spearhead, TAUNTON. Brit. Mus. WG 2046. Dobson (1931), 254. Details as above.
103. Spearhead, YEOVIL. Drawing from Davies (1927), 28. Basal-looped; Penard Phase.
104. Spearhead, ROWBERROW WARREN. York Mus. Knight (1915), 201. Pegged; Penard Phase onwards.



105. Spearhead, CATCOTT. Taunton Mus. Similar decoration is common among Carps' Tongue Spearheads of the Ewart Park Phase.
- *106. Spearhead, Nr. BATH. Ulster Mus.
- *107. Spearhead, CHEDDAR. Cheddar Mus.
- *108. Spearhead, WESTHAY HEATH. Clapham and Godwin, *Transactions of the Royal Society B.*, 233 (1948), 263, fig. 24.
- *109. Spearhead, SOUTH CADBURY. Taunton Mus. 55.A.5.
110. Dagger, ROWBERROW. Taunton Mus. 30d. Knight (1915), 201. *P.U.B.S.S.*, 3, no. 1, 34. Early Bronze Age.
111. Dagger, PITNEY MOOR. Taunton Mus. 80a. Trumps' Group II 'Chatteris' Class (Trump, 1962, 86); Taunton Phase.
112. Dagger, WILLITON. Taunton Mus. Ex. Greenwell Colln. Details as above.
113. Tanged Knife, MAESBURY. Wells Mus. 1447. Dobson (1931), 83. Acton Park or Taunton Phase.
114. Rapier, GLASTONBURY. Taunton Mus. 48c. Dobson (1931), 96. Group III 'Lisburn' Class (Trump, 1962, 91); Penard Phase.
115. Rapier, WALCOT, BATH. Alnwick Cas. Mus. 236. Hilt only. Details as above.
116. Sword, MIDSOMER NORTON. Taunton Mus. Evans (1881), 279. *P.S.A.N.H.S.*, 22 (i), 69-72; 44, lvi. A fine example of a Group IV 'Wilburton' sword (Burgess, 1968, 13); Wilburton Phase.
117. Rapier, WELLS. Wells Mus. 1445. Group III 'Lisburn' Class (Trump, 1962, 91); Penard Phase.
118. Sword, SOMERSET. Taunton Mus. 31.11.15. Group I 'Lambeth' Class (Burgess, 1968a, 35); Penard Phase.
119. Sword, WELLS, Wells Mus. 1446. Fragmentary leaf-shaped sword. The rivet holes on the blade are evidence of re-utilisation. Unfortunately the absence of the hilt makes exact categorisation impossible.
120. Sword, GLASTONBURY. Glast. Mus. GM 183. 'Chelsea' Class (Burgess, 1968a, 35); Penard Phase.
121. Sword, PITNEY MOOR. Taunton Mus, *P.S.A.N.H.S.*, 48 (ii), 230-233. Ewart Park Type, Group V (Burgess, 1968a, 40-41).
122. Socketed Knife, GLASTONBURY. Glast. Mus. GM 190. Evans (1881), 249. *P.S.A.N.H.S.*, 47, (ii), 233; 48 (i), 83. 'Thorndon' type (Hodges, 1956); Ewart Park Phase.
123. Sword, WELLINGTON. Taunton Mus. Dobson (1931), 96. Fragmentary, probably 'Lambeth' type (Burgess, 1968a, 35); Penard Phase.
124. Rapier, PEN PITS (PENSELWOOD). Salisbury Mus. 235. *P.P.S.*, 5, 98. Moore and Rowlands (1972), 60. Group II 'Thetford' Class (Trump, 1962, 87 and no. 235). Burgess Group III on blade cross-section (Burgess, 1974, 204); Taunton Phase.
125. Sword, BATH. Alnwick Cas. Mus. 236. 'Chelsea' type (Burgess, 1968a, 35); Penard Phase.
126. Sword, TWERTON. Alnwick Cas. Mus. *Ant. J.*, 3, 334; 4, 147. Evans (1881), 284, where it is mistakenly labelled 'Tiverton'. Ballintober type (Burgess, 1968a, 35); Penard Phase.
127. Rapier, NORTON FITZWARREN. Univ. Mus. of Arch. and Ethn., Cambridge. Trump (1962), 83, fig. 2 and no. 233. Trump Group I. Burgess Group II on blade cross-section (Burgess, 1974, 204); Acton Park Phase.
128. Chisel, CAMERTON. Taunton Mus. Id. *Ant. J.*, 15, 424. *P.S.A.N.H.S.*, 83, (ii), 161. Taunton Phase.
129. Chisel, HAM HILL. Taunton Mus. E47 1c. Wilburton/Ewart Park Phase.
130. Chisel, SOMERSET. Ashmolean Mus. 1927-2384. Wilburton/Ewart Park Phase.
131. Socketed Chisel, HAM HILL. Taunton Mus. 21d. Ewart Park Phase.
132. Socketed Gouge, HAM HILL. Taunton Mus. 31d. Ewart Park Phase.
133. Socketed Gouge, YATTON. Taunton Mus. 67-A-3. Ewart Park Phase.



134. Socketed Gouge, SOMERSET. Taunton Mus. 310. *P.S.A.N.H.S.*, 48 (i), 83. Fragmentary. Ewart Park Phase.
135. Socketed Hammer, 'SOMERSET' (bought at Bristol). Ashmolean Mus. 1927-2632. Ewart Park Phase.
136. Sickle blade, HAM HILL. Taunton Mus. E37. Taunton Phase or later; a similar blade comes from the Edington Burtle Hoard (*Inv. Arch.* GB 44, no. 15).
137. Torc, SANDFORD HILL. Bristol Mus. 65a. *Notes and Queries for Somt. and Dorset*, 28, 259-60. Grinsell (1968), no. 65a. Ornament Horizon (Smith, 1959); Taunton Phase.
138. Socketed Adze, BARROW GURNEY. Bristol Mus. F 3605. *Ant. J.*, 33, 202-3. Grinsell (1968), no. 67. Probably Ewart Park Phase, although the collar is like those on Taunton axes.
139. Quoit-headed pin, CHILTON BUSTLE. Drawing from Evans (1881), 368. Ornament Horizon (Smith, 1959); Taunton Phase.
140. Torc, PEN PITS (PENSELWOOD). Taunton Mus. 46b. *P.S.A.N.H.S.*, 7 (i), 27. Details as above.
- *141. Torc, CREWKERNE. Taunton Mus. *P.S.A.N.H.S.*, 51 (ii), 148.
- *142. Torc, TAUNTON. *P.S.A.N.H.S.*, 28 (i), 77; 28 (ii), 149. Dobson (1931), 90.

APPENDIX A

A LIST OF SOMERSET HOARDS

- Nr. Bath, private, location unknown.
- Chilton Polden, Glastonbury Mus.
- Edington Burtle, Taunton Mus., *Inv. Arch.* GB 44.
- Ilminster, Ashmolean Mus., Evans (1881), 90, 384.
- Midsomer Norton, Taunton Mus., *Current Archaeology*, 28.
- Milverton, Taunton Mus., Minnitt, 1974.
- Monkswood, nr. Bath, Pump Rm., Bath, *Inv. Arch.*, GB 42.
- Quantock Hills, location unknown, *Archaeologia*, 15, 94-5.
- Sherford, Taunton Mus., *Inv. Arch.*, GB 45.
- South Petherton, *P.S.A.N.H.S.*, 118, 54.
- Taunton Workhouse, Taunton Mus., *Inv. Arch.*, GB 43.
- Weare, Taunton Mus., *P.S.A.N.H.S.*, 78, lxxvi.
- Wedmore, location unknown, *Arch. Assoc. J.*, 21, 12.
- West Buckland, location unknown, *Arch. J.*, 37, 107.
- Wick Park, Stogursey, Taunton Mus., *P.S.A.N.H.S.*, 117, 47-63.

APPENDIX B

BRONZES NOT LISTED IN THE CATALOGUE

The following bronzes have been reported to the writer since the completion of the catalogue:

Socketed Axe, LUCCOMBE. Taunton Mus. Minnitt, *P.S.A.N.H.S.*, forthcoming. Butler's 'slender faceted' type (Butler, 1963, 86); Ewart Park Phase. This axe is very similar to no. 60 from Glastonbury, and looks as though it may be from the same mould.

Spearheads, two, WORLEBURY HILL. Weston-s-Mare Mus. Type unknown.

Alcock (1972) lists the following bronzes from the excavations at SOUTH CADBURY:

Flanged Axe, fig. 23 and p. 113. Appears to be EBA Arretton Down type.

Socketed Knife, fig. 11 and p. 114. Ewart Park Phase.

Pegged and socketed Spearhead, a common type from the Penard Phase onwards. Similar to no. 101 from another hillfort, Ham Hill. Fig. 23, p. 114.

Two Razors, one complete, one fragmentary. Both Hallstatt C type, belonging to late Ewart Park/Early Iron Age. Fig. 23, p. 120.

ABBREVIATIONS

- Ant. J., *Antiquaries Journal*.
 Arch. Camb., *Archaeologia Cambrensis*.
 Arch. J., *Archaeological Journal*.
 B.B.C.S., *Bulletin of the Board of Celtic Studies*.
 H.M.Q.R., *Hull Museum Quarterly Records*.
 Inv. Arch., *Inventaria Archaeologica*.
 J.R.S.A.I., *Journal of the Royal Society of Antiquaries of Ireland*.
 P.P.S., *Proceedings of the Prehistoric Society*.
 P.S.Ant., *Proceedings of the Society of Antiquaries*.
 P.S.A.N., *Proceedings of the Society of Antiquaries of Newcastle*.
 P.S.A.N.H.S., *Proceedings of the Somerset Archaeological and Natural History Society*.
 P.S.A.S., *Proceedings of the Society of Antiquaries of Scotland*.
 P.U.B.S.S., *Proceedings of the University of Bristol Speleological Society*.

REFERENCES

- Alcock, L., 1972, 'By South Cadbury is that Camelot . . . ' *Excavations at Cadbury Castle 1966-70* (London).
 Balch, H. E., 1914, *Wookey Hole*.
 Briard, J., 1965, *Les Depots Bretons et L'Age du Bronze Atlantique* (Rennes).
 British Museum, 1953, *Later Prehistoric Antiquities of the British Isles* (London).
 Britton, D., 1963, 'Traditions of metalworking in the later Neolithic and Early Bronze Age of Britain: Part I', *P.P.S.*, 29, 258-325.
 Burgess, C. B., 1962a, 'A Socketed Axe from Central Monmouthshire and its significance for the Bronze Age in Wales and the Marches', *Monmouthshire Antiq.*, 1 (ii), 17-27.
 Burgess, C. B., 1962b, 'The Bronze Age in Radnorshire: A Re-Appraisal', *Radnorshire Soc. Trans.*, 32.
 Burgess, C. B., 1968a, 'The Late Bronze Age in the British Isles and North Western France', *Arch. J.*, 125, 1-45.
 Burgess, C. B., 1968b, *Bronze Age Metalwork in Northern England c.1000 to 700 BC*. (Newcastle-Upon-Tyne).
 Burgess, C. B., 1974, 'The Bronze Age', *British Prehistory*, ed. C. Renfrew (London).
 Burgess, C. B., 1976, 'The Gwithian Mould and the Forerunners of South Welsh Axes', *Settlement and Economy in the Third and Second Millennia BC*, British Archaeological Reports 33.
 Burgess, Coombs and Davies, 1972, 'The Broadward Complex and Barbed Spearheads', *Prehistoric Man in Wales and the West*, ed. Lynch, F. M., and Burgess, C. B. (Bath).
 Butler, J. J., 1963, 'Bronze Age Connections across the Irish Sea', *Palaeohistoria*, 9.
 Clark, R. R., 1960, *East Anglia*.
 Coles, J. M., 1963, 'Scottish Middle Bronze Age Metalwork', *P.S.A.S.*, 47, 82-156.
 Cowen, J. D., 1967, 'The Hallstatt Sword of Bronze; on the Continent and in Britain', *P.P.S.*, 33, 377-455.
 Davey, P. J., 1973, *Bronze Age Metalwork from Lincolnshire* (Oxford).
 Davies, J. H., 1927, *Early Life in the West*.
 Dobson, I., 1931, *The Archaeology of Somerset*.
 Dunning, G., 1959, 'The Distribution of Socketed Axes of Breton Type', *U.J.A.*, 22, 53-55.
 Eogan, G., 1964, 'The Later Bronze Age in Ireland in the Light of Recent Research', *P.P.S.*, 30, 268-351.
 Evans, E., 1933, 'The Bronze Age Spearhead in Great Britain and Ireland', *Archaeologia*, 83, 187-202.
 Evans, J., 1881, *Ancient Bronze Implements of Great Britain* (London).
 Fox, A., 1964, *South-West England*.
 Greenwell, W., and Brewis, W. P., 1909, 'The Origin, Evolution and Classification of the Bronze Spearhead in Great Britain and Ireland', *Archaeologia*, 61, 439-472.
 Grimes, W. F., 1951, *The Prehistory of Wales* (Cardiff).
 Grinsell, L., 1968, *South-Western British Prehistoric Collections* (City Museum, Bristol).
 Grinsell, L., 1969, *The Archaeology of Exmoor*.
 Hawkes, C. F. C., 1941, 'The Looped and Leaf-shaped Spearhead', *P.P.S.*, 7 (i), 128-131.
 Hawkes, C. F. C., 1960, 'A Scheme for the British Bronze Age', CBA Bronze Age Conference, London, 1960.
 Hodges, H. W. M., 1956, 'Studies in the Late Bronze Age of Ireland, II: The Typology and Distribution of Bronze Implements', *U.J.A.*, 19, 29-56.
 Knight, F. A., 1902, *The Seaboard of Mendip*.
 Knight, F. A., 1915, *The Heart of Mendip*.
 MacWhite, E., 1954, 'The Bronze Socketed Gouge in Ireland', *J.R.S.A.I.*, 74, 160-165.
 McNeil, R., 1973, 'A Report on the Bronze Age Hoard from Wick Park, Stogursey, Somerset', *P.S.A.N.H.S.*, 117, 47-63.
 Minnitt, S., 1974, 'The Early Bronze Age Hoard from Milverton, Somerset', *P.S.A.N.H.S.*, 118, 51.
 Moore, C. N., and Rowlands, M., 1972, *Bronze age Metalwork in Salisbury Museum*.
 Novotna, M., 1970, 'Der Axte und Beile in der Slowakei', *Praehistorische Bronzefunde*, Abteilung IX, Band 3.
 Pearce, S., 1974, 'A Palstave Hoard from South Petherton', *P.S.A.N.H.S.*, 118, 54.

- Savory, H. N., 1958, 'The Late Bronze Age in Wales; some new discoveries and interpretations', *Arch. Camb.*, 107, 3-63.
- Savory, H. N., 1968, 'A Double-Looped Palstave from Central Wales', *B.B.C.S.*, 22, 407-410.
- Smith, M. A., 1959, 'Some Somerset Hoards and their Place in the Bronze Age of Southern Britain', *P.P.S.*, 25, 144-187.
- St. George Gray, H., 1937, 'A Double-Looped Palstave found at Curland, nr. Taunton', *Ant. J.*, 17, 163-169.
- Trump, B. A. V., 1962, 'The Origin and Development of British Middle Bronze Age Rapiers', *P.P.S.*, 28, 80-102.

ACKNOWLEDGEMENTS

Grateful thanks are due to the curators and staff of the many museums visited, especially Mr. S. Minnitt of the County Museum, which holds most of the bronzes. The catalogue was originally an undergraduate dissertation for the University of North Wales, Bangor, and I am indebted to my Supervisor, Miss F. M. Lynch, for her help and comments. Thanks must also go to those people who helped me in trying to locate bronzes and to C. Burgess for giving me some new ideas on the metalwork of the 'Ornament Horizon'.